

Product name

Anti-IL22 / Interleukin 22 antibody

Specificity

Mouse IL22

Antibody description

Rabbit polyclonal to IL22 / Interleukin 22

Preparation

Produced in rabbits immunized with A synthetic peptide corresponding to the C-terminus of the mouse IL22., and purified by antigen affinity chromatography.

Formulation

0.2 µm filtered solution in PBS

Storage

This antibody can be stored at 2°C-8°C for one month without detectable loss of activity. Antibody products are stable for twelve months from date of receipt when stored at -20°C to -80°C.

Preservative-Free.

Sodium azide is recommended to avoid contamination (final concentration 0.05%-0.1%). It is toxic to cells and should be disposed of properly. Avoid repeated freeze-thaw cycles.

Clonality

Polyclonal

Ig Type

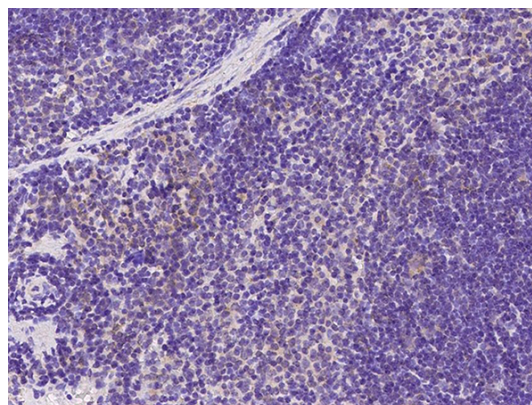
Rabbit IgG

Applications

IHC-P

Dilutions

IHC-P: 0.1-2 µg/mL

Validations

IL22 Antibody, Rabbit PAb, Antigen Affinity Purified, Immunohistochemistry

Immunochemical staining of mouse IL22 in mouse spleen with rabbit polyclonal antibody (0.5 µg/mL, formalin-fixed paraffin embedded sections).