

PARP1 antibody

Catalog Number: 113588

Product name

PARP1 antibody

WB: 1:500-1:5000

IP: 1:200-1:2000

Specificity

Human, Mouse, Rat; other species not tested.

Antibody description

PARP1 Rabbit Polyclonal antibody. Positive IP detected in K-562 cells. Positive WB detected in Fas antibody treated HeLa cells, A549 cells, Cobalt Chloride treated HeLa cells, HeLa cells, Jurkat cells, K-562 cells, Raji cells, Staurosporine treat Jurkat cells, Y79 cells. Observed molecular weight by Western-blot: 113-116 kDa

Preparation

This antibody was obtained by immunization of PARP1 recombinant protein (Accession Number: NM_001618). Purification method: Antigen affinity purified.

Formulation

PBS with 0.02% sodium azide and 50% glycerol pH 7.3.

Storage

Store at -20°C. DO NOT ALIQUOT

Clonality

Polyclonal

Ig Type

Rabbit IgG

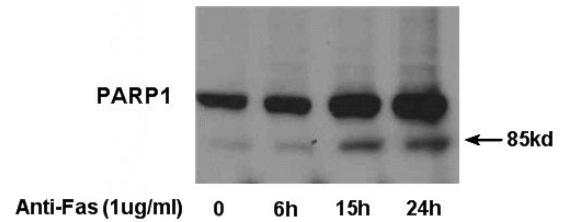
Applications

ELISA, IP, WB

Dilutions

Recommended Dilution:

Validations

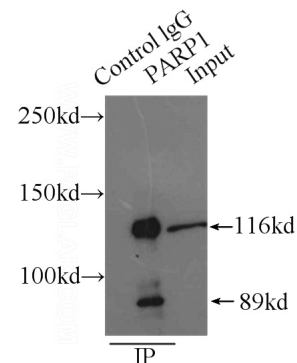


Anti-Fas (60196-1-Ig) treated HeLa cells were subjected to SDS PAGE followed by western blot

Anti-Fas treated HeLa cells were subjected to SDS PAGE followed by western blot with Catalog No:113588 (PARP1 Antibody) at dilution of

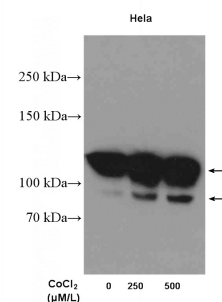
1:1000.

IP Result of anti-PARP1 (IP:Catalog No:113588, 4ug; Detection:Catalog No:113588 1:600) with



K-562 cells lysate 5000ug.

Cobalt Chloride treated HeLa cells were subjected to SDS PAGE followed by western blot with Catalog No:113588(PARP1 Antibody) at dilution of



PARP1 antibody



Catalog Number: 113588

1:1000