

Icam-1 antibody

Catalog Number: 111588

Product name

Icam-1 antibody

IP: 1:200-1:1000

IHC: 1:20-1:200

Specificity

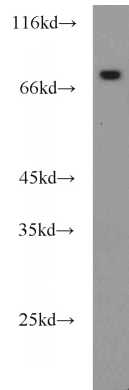
Mouse,Rat; other species not tested.

IF: 1:20-1:200

Antibody description

Icam-1 Rabbit Polyclonal antibody. Positive IF detected in 4T1 cells. Positive IHC detected in mouse lung tissue. Positive IP detected in 4T1 cells. Positive WB detected in rat heart tissue. Observed molecular weight by Western-blot: 85-95 kDa

Validations



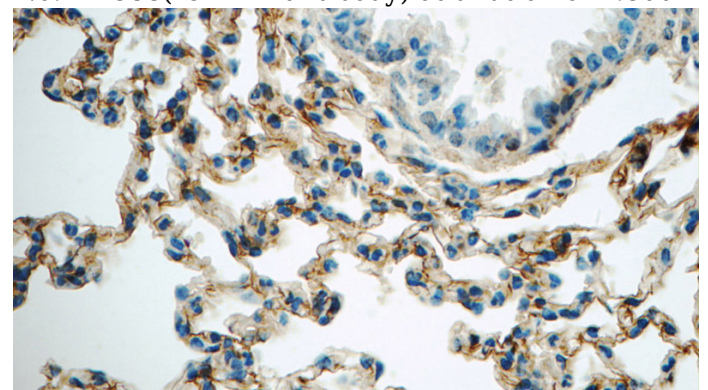
Preparation

This antibody was obtained by immunization of Peptide (Accession Number: NM_010493). Purification method: Antigen affinity purified.

rat heart tissue were subjected to SDS PAGE followed by western blot with Catalog No:111588(ICAM-1 antibody) at dilution of 1:800

Formulation

PBS with 0.02% sodium azide and 50% glycerol pH 7.3.



Storage

Store at -20°C. DO NOT ALIQUOT

Clonality

Polyclonal

Ig Type

Rabbit IgG

Applications

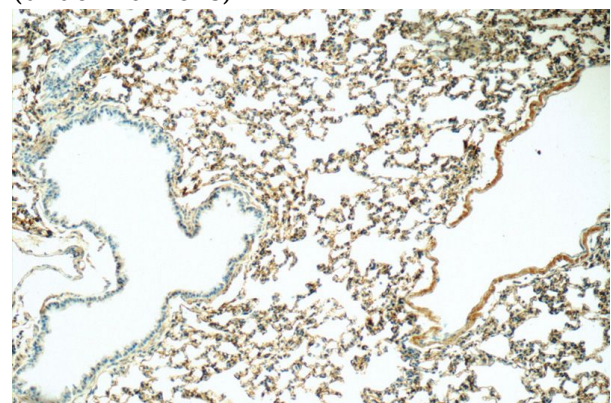
ELISA, IF, WB, IHC, IP

Dilutions

Recommended Dilution:

WB: 1:200-1:2000

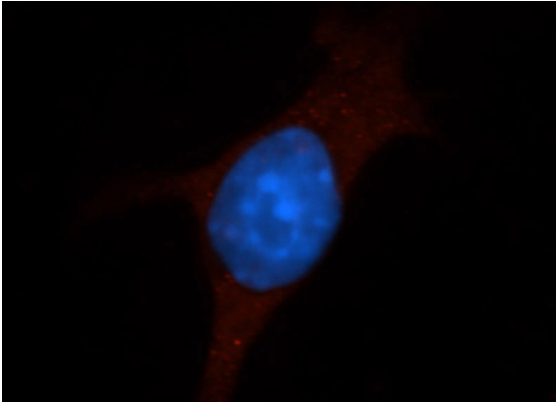
Immunohistochemistry of paraffin-embedded mouse lung tissue slide using Catalog No:111588(ICAM-1 Antibody) at dilution of 1:50 (under 40x lens)



Icam-1 antibody

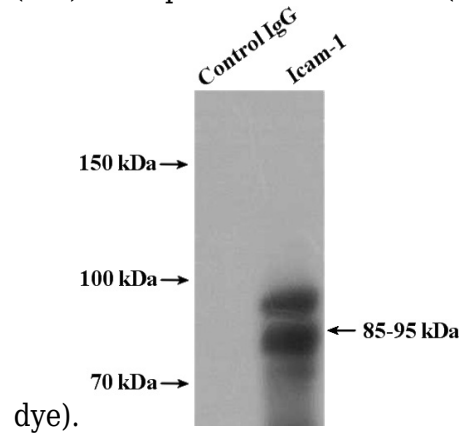
Catalog Number: 111588

Immunohistochemistry of paraffin-embedded mouse lung tissue slide using Catalog No:111588(ICAM-1 Antibody) at dilution of 1:50 (under 10x lens)



Immunofluorescent analysis of 4T1 cells, using ICAM-1 antibody Catalog No:111588 at 1:50

dilution and FITC-labeled donkey anti-rabbit IgG (red). Blue pseudocolor = DAPI (fluorescent DNA



dye).
IP Result of anti-ICAM-1 (IP:Catalog No:111588, 4ug; Detection:Catalog No:111588 1:300) with 4T1 cells lysate 2800ug.