

# CEP97 antibody



Catalog Number: 109188

## Product name

CEP97 antibody

WB: 1:500-1:5000

IP: 1:500-1:5000

## Specificity

Human; other species not tested.

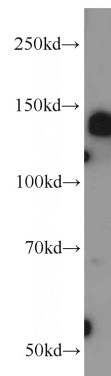
IHC: 1:20-1:200

IF: 1:20-1:200

## Antibody description

CEP97 Rabbit Polyclonal antibody. Positive IP detected in HeLa cells. Positive WB detected in HL-60 cells, HEK-293 cells, HeLa cells, PC-3 cells. Positive IF detected in MDCK cells. Positive IHC detected in human breast cancer tissue, human liver tissue. Observed molecular weight by Western-blot: 130-140 kDa

## Validations



## Preparation

This antibody was obtained by immunization of CEP97 recombinant protein (Accession Number: NM\_024548). Purification method: Antigen affinity purified.

HL-60 cells were subjected to SDS PAGE followed by western blot with Catalog No:109188(CEP97 antibody) at dilution of 1:1000

## Formulation

PBS with 0.02% sodium azide and 50% glycerol pH 7.3.

## Storage

Store at -20°C. DO NOT ALIQUOT

## Clonality

Polyclonal

## Ig Type

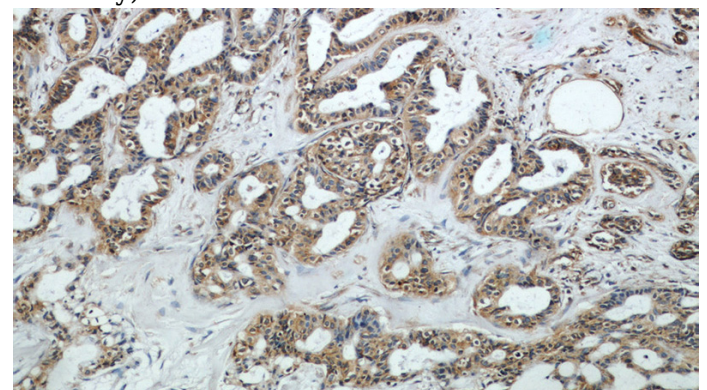
Rabbit IgG

## Applications

ELISA, WB, IHC, IF, IP

## Dilutions

Recommended Dilution:

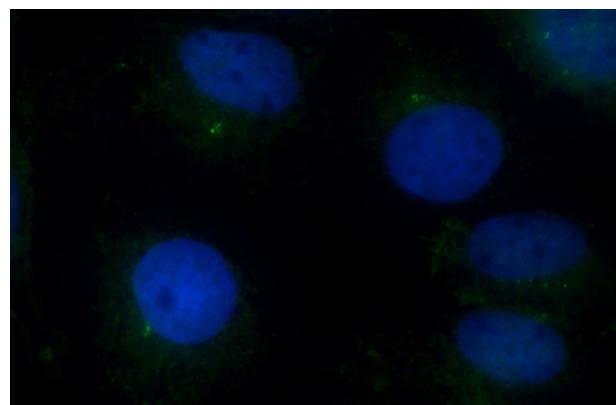
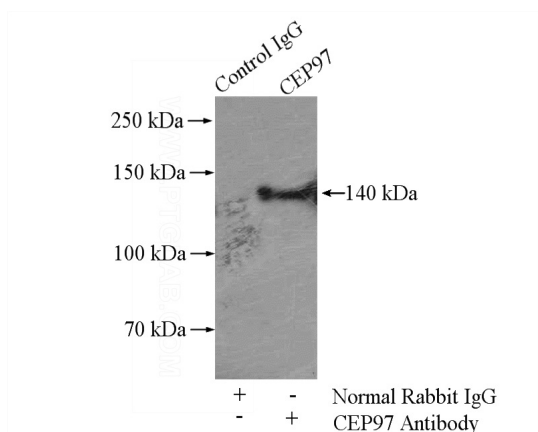


Immunohistochemical of paraffin-embedded human breast cancer using Catalog No:109188(CEP97 antibody) at dilution of 1:50 (under 10x lens)

# CEP97 antibody

Catalog Number: 109188

---



Immunofluorescent analysis of MDCK cells using Catalog No:109188(CEP97 Antibody) at dilution of 1:50 and Alexa Fluor 488-conjugated AffiniPure Goat Anti-Rabbit IgG(H+L)

IP Result of anti-CEP97 (IP:Catalog No:109188, 4ug; Detection:Catalog No:109188 1:1000) with HeLa cells lysate 1200ug.