

General Information

Gene Name Synonym

Metalloprotease RGD disintegrin protein;
Metalloproteinase-like, disintegrin-like, and
cysteine-rich protein 15; Metargidin

Protein Construction

A DNA sequence encoding the human ADAM15
(Q13444-1) (Met 1-Thr 696) precursor was
expressed, with a C-terminal polyhistidine tag.

Organism

Human

Expression Host

CHO Cells

QC Testing

Purity

> 95 % as determined by SDS-PAGE

Endotoxin

< 1.0 EU per μg of the protein as determined by
the LAL method

Stability

Samples are stable for up to twelve months from
date of receipt at -70°C

Predicted N terminal

Asp 207 (mature form)

Molecular Mass

The secreted recombinant human ADAM15

(mature form) comprises 501 amino acids after
proteolytic of the signal peptide and pro peptide
and has a predicted molecular mass of 54 kDa. As
a result of glycosylation, rhADAM15 migrates as
an approximately 65-70 kDa band in SDS-PAGE
under reducing conditions.

Formulation

Lyophilized from sterile PBS, pH 7.4

1. 5 % trehalose and mannitol are added as
protectants before lyophilization.

2. Please contact us for any concerns or special
requirements.

Usage Guide

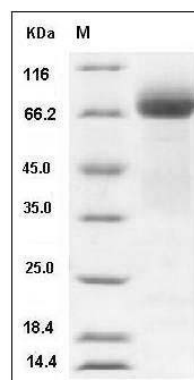
Storage

Store it under sterile conditions at -20°C to -80°C .
It is recommended that the protein be aliquoted
for optimal storage. Avoid repeated freeze-thaw
cycles.

Reconstitution

Adding sterile water, prepare a stock solution of
0.25 mg/ml. Concentration is measured by UV-Vis.

SDS-PAGE



Human ADAM15 Protein (His Tag) SDS-PAGE