

# Anti-Fosl1 antibody



Catalog Number: 142188

## Product name

Anti-Fosl1 antibody

## Specificity

Human Fosl1

## Antibody description

Rabbit Polyclonal to Human Fosl1

## Preparation

Produced in rabbits immunized with a synthetic peptide corresponding to the center region of the Human Fosl1, and purified by antigen affinity chromatography.

## Formulation

0.2 µm filtered solution in PBS

## Storage

This antibody can be stored at 2°C-8°C for one month without detectable loss of activity. Antibody products are stable for twelve months from date of receipt when stored at -20°C to -80°C.

Preservative-Free.

Sodium azide is recommended to avoid contamination (final concentration 0.05%-0.1%). It is toxic to cells and should be disposed of properly. Avoid repeated freeze-thaw cycles.

## Clonality

Polyclonal

## Ig Type

Rabbit IgG

## Applications

WB, ICC/IF, IF, IP

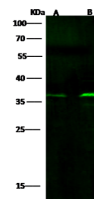
## Dilutions

WB: 10-20 µg/ml

ICC/IF: 0.5-3 µg/mL

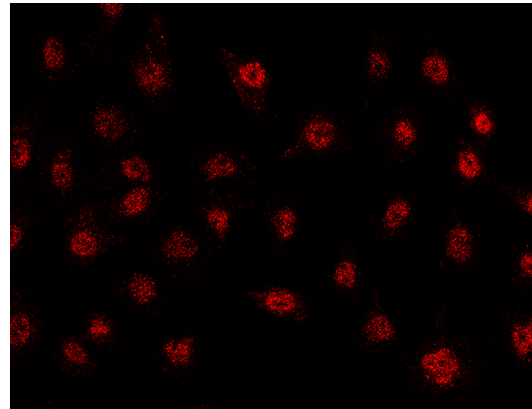
IP: 0.5-2 uL/mg of lysate

## Validations

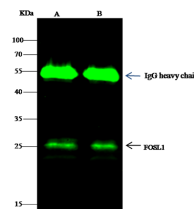


Lanes	A	B
Items		
Sample (whole cell lysate)	HepG2	Jurkat
Sample Volume (µg/lane)	30	30
Gel	13% SDS-PAGE reducing gel	
Recommended Concentration	10-20 µg/ml	
Secondary Antibody	DyLight 800-labeled Antibody to Rabbit IgG (H+L), at 1:5000 dilution.	
	Developed using Odyssey imaging system.	
Explanation	Predicted band size : 29 kDa Observed band size : 37 kDa	

Fosl1 Antibody, Rabbit PAb, Antigen Affinity Purified, Western blot



Fosl1 Antibody, Rabbit PAb, Antigen Affinity Purified, Immunofluorescence



Lanes	A	B
Items		
Sample (whole cell lysate)	HepG2	Jurkat
Sample quantity	0.5 mg	
IP antibody quantity	2 µg	
Immunoprecipitation beads (Protein G)	60 ng	
Gel	13% SDS-PAGE reducing gel	
Primary antibody	KLH-SMCC-SINOVA1 L23 antibody at 10 µg/ml	
Secondary antibody	DyLight 800-labeled antibody to rabbit IgG (H+L), at 1:5000 dilution	

Fosl1 Antibody, Rabbit PAb, Antigen Affinity Purified, Immunoprecipitation