

GSTM5 antibody

Catalog Number: 111188

Product name

GSTM5 antibody

WB: 1:200-1:2000

IP: 1:200-1:2000

Specificity

Human, Mouse, Rat; other species not tested.

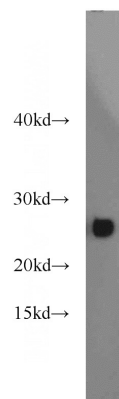
IHC: 1:20-1:200

IF: 1:20-1:200

Antibody description

GSTM5 Rabbit Polyclonal antibody. Positive WB detected in mouse testis tissue, HeLa cells, mouse skeletal muscle tissue, rat skeletal muscle tissue. Positive IP detected in mouse skeletal muscle tissue. Positive IF detected in HepG2 cells. Positive IHC detected in human heart tissue. Observed molecular weight by Western-blot: 26kd

Validations



Preparation

This antibody was obtained by immunization of GSTM5 recombinant protein (Accession Number: NM_000851). Purification method: Antigen affinity purified.

mouse testis tissue were subjected to SDS PAGE followed by western blot with Catalog No:111188(GSTM5 antibody) at dilution of 1:1000

Formulation

PBS with 0.02% sodium azide and 50% glycerol pH 7.3.

Storage

Store at -20°C. DO NOT ALIQUOT

Clonality

Polyclonal

Ig Type

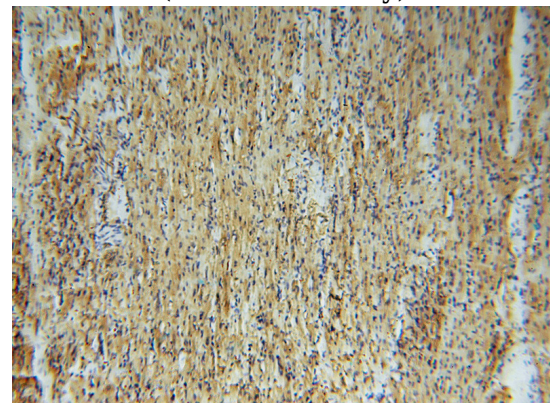
Rabbit IgG

Applications

ELISA, WB, IHC, IF, IP

Dilutions

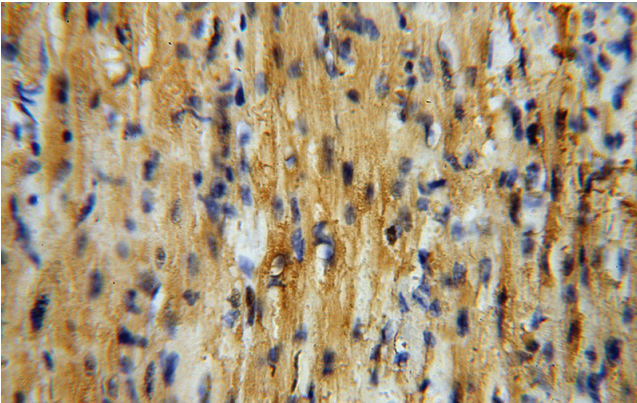
Recommended Dilution:



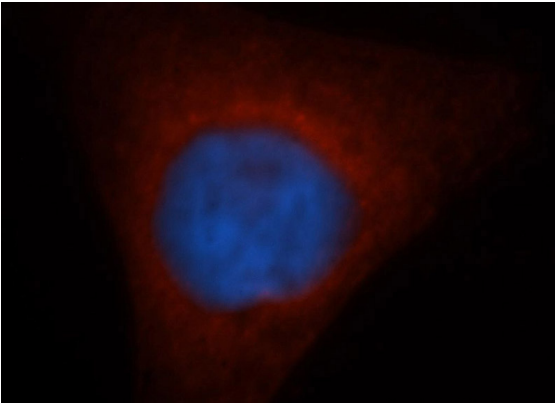
Immunohistochemical of paraffin-embedded human heart using Catalog No:111188(GSTM5 antibody) at dilution of 1:50 (under 10x lens)

GSTM5 antibody

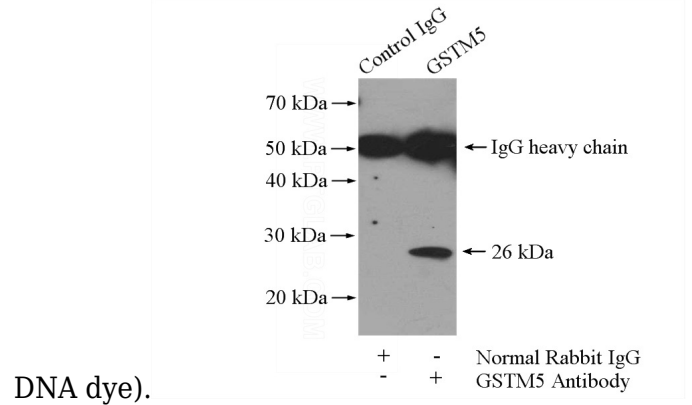
Catalog Number: 111188



Immunohistochemical of paraffin-embedded human heart using Catalog No:111188(GSTM5 antibody) at dilution of 1:50 (under 40x lens)



Immunofluorescent analysis of HepG2 cells, using GSTM5 antibody Catalog No:111188 at 1:50 dilution and Rhodamine-labeled goat anti-rabbit IgG (red). Blue pseudocolor = DAPI (fluorescent



DNA dye).

IP Result of anti-GSTM5 (IP:Catalog No:111188, 4ug; Detection:Catalog No:111188 1:600) with mouse skeletal muscle tissue lysate 4000ug.