

# Anti-SZRD1 antibody



Catalog Number: 141188

## Product name

Anti-SZRD1 antibody

## Specificity

Human C1ORF144

## Antibody description

Rabbit Polyclonal to Human SZRD1

## Preparation

Produced in rabbits immunized with a synthetic peptide corresponding to the center region of the Human C1ORF144, and purified by antigen affinity chromatography.

## Formulation

0.2 µm filtered solution in PBS

## Storage

This antibody can be stored at 2°C-8°C for one month without detectable loss of activity. Antibody products are stable for twelve months from date of receipt when stored at -20°C to -80°C.

Preservative-Free.

Sodium azide is recommended to avoid contamination (final concentration 0.05%-0.1%). It is toxic to cells and should be disposed of properly. Avoid repeated freeze-thaw cycles.

## Clonality

Polyclonal

## Ig Type

Rabbit IgG

## Applications

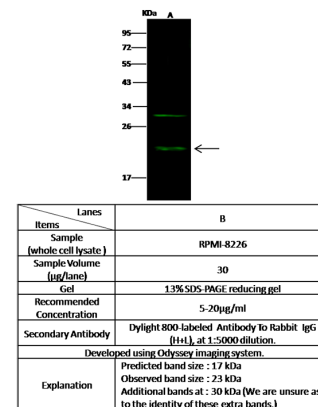
WB, IP

## Dilutions

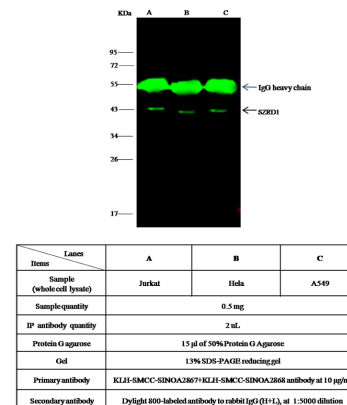
WB: 5-20 µg/ml

IP: 4-8 uL/mg of lysate

## Validations



## Human C1ORF144 Western blot (WB) 14945



## Human C1ORF144 Immunoprecipitation(IP) 14946