

# Human GH1 / Growth hormone 1 (His Tag) recombinant protein



Catalog Number: 500188

## General Information

### Gene Name Synonym

Growth hormone; Growth hormone 1; Pituitary growth hormone

### Protein Construction

A DNA sequence encoding the human GH1 (P01241) (Phe27-Phe217) was expressed with a polyhistidine tag at the N-terminus.

### Organism

Human

### Expression Host

E. coli

## QC Testing

### Activity

Measured by its ability to promote proliferation of INS-1 cells.

The ED<sub>50</sub> for this effect is 0.3-1.2 ng/mL.

### Purity

> 85 % as determined by SDS-PAGE.

### Endotoxin

Please contact us for more information.

### Stability

Samples are stable for up to twelve months from date of receipt at -70°C

### Predicted N terminal

Pro

## Molecular Mass

The recombinant human GH1 consists 212 amino acids and predicts a molecular mass of 24.7 kDa.

## Formulation

Lyophilized from sterile PBS, pH 7.4.

1. 5 % trehalose and mannitol are added as protectants before lyophilization.

2. Please contact us for any concerns or special requirements.

## Usage Guide

### Storage

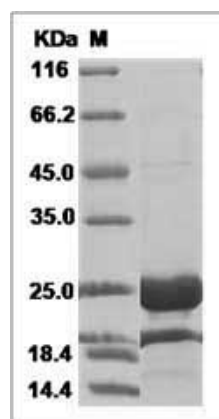
Store it under sterile conditions at -20°C to -80°C.

It is recommended that the protein be aliquoted for optimal storage. Avoid repeated freeze-thaw cycles.

### Reconstitution

Adding sterile water, prepare a stock solution of 0.25 mg/ml. Concentration is measured by UV-Vis.

## SDS-PAGE



Human GH1 / Growth hormone 1 Protein (His Tag)  
SDS-PAGE