

Anti-Phospho-PTP1B (Ser352) Rabbit antibody



Catalog Number: 168888

Product name

WB, ICC/IF, IP

Anti-Phospho-PTP1B (Ser352) Rabbit antibody

Dilutions

Specificity

1:1000

Human

1:50

Antibody description

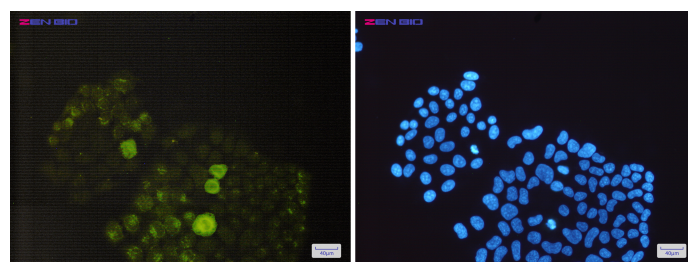
1:20

Phospho-PTP1B (Ser352) Rabbit monoclonal antibody

Validations

Preparation

Antigen: A synthetic phosphopeptide corresponding to residues surrounding Ser352 of human PTP1B



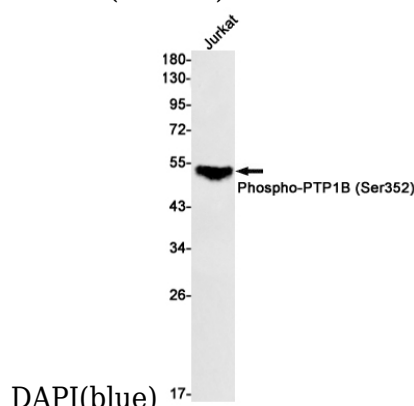
Formulation

Supplied in 50nM Tris-Glycine(pH 7.4), 0.15M NaCl, 40%Glycerol, 0.01% sodium azide and 0.05% BSA.

Immunocytochemistry of Phospho-PTP1B (Ser352)(green) in Hela cells using Phospho-PTP1B (Ser352) Rabbit mAb at dilution 1/50, and

Storage

Store at 4°C short term. Aliquot and store at -20°C long term. Avoid freeze / thaw cycle.



Clonality

Monoclonal

DAPI(blue)

Ig Type

Rabbit IgG

Western blot detection of Phospho-PTP1B (Ser352) in Jurkat cell lysates using Phospho-PTP1B (Ser352) Rabbit mAb(1:1000 diluted).Predicted band size:50kDa.Observed band size:50kDa.

Applications