

Anti-Quiescin Q6 Rabbit antibody



Catalog Number: 167888

Product name

Anti-Quiescin Q6 Rabbit antibody

Specificity

Human

Antibody description

Quiescin Q6 Rabbit monoclonal antibody

Preparation

Antigen: A synthetic peptide of human Quiescin Q6

Formulation

50nM Tris-Glycine(pH 7.4), 0.15M NaCl, 40%Glycerol, 0.01% sodium azide and 0.05% BSA

Storage

Store at 4°C short term. Store at -20°C long term. Avoid freeze / thaw cycle.

Clonality

Monoclonal

Ig Type

Rabbit IgG

Applications

WB, IHC-P, FC, IP

Dilutions

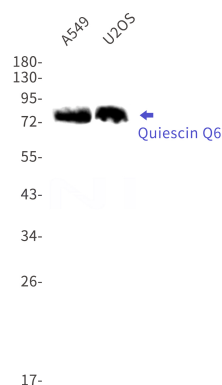
WB: 1/1000

IHC: 1/50

FC: 1/20

IP: 1/20

Validations



Western blot detection of Quiescin Q6 in A549,U2OS cell lysates using Quiescin Q6 Rabbit mAb(1:1000 diluted).Predicted band size:83kDa.Observed band size:83kDa.