

Anti-AKT Rabbit antibody



Catalog Number: 166888

Product name

Rabbit IgG

Anti-AKT Rabbit antibody

Applications

Specificity

ICC/IF, WB, IHC-P, ELISA

Human, Mouse, Rat

Dilutions

Antibody description

IF: 1/50-200

AKT Rabbit polyclonal antibody

WB: 1/500 - 1/2000

Preparation

IHC: 1/100 - 1/300

Antigen: The antiserum was produced against synthesized peptide derived from human AKT1/2/3. AA range:281-330

ELISA: 1/40000

Validations

Formulation

Liquid in PBS containing 50% glycerol, 0.5% BSA and 0.02% sodium azide.

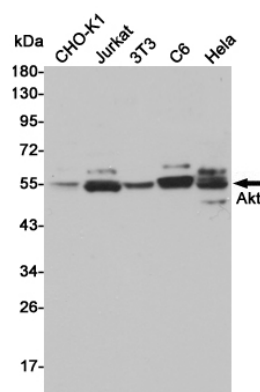
Storage

Store at 4°C short term. Store at -20°C long term. Avoid freeze / thaw cycle.

Clonality

Polyclonal

Ig Type



Western blot detection of Akt in CHO-K1, Jurkat, 3T3, C6 and HeLa cell lysates using Akt rabbit pAb (1:1000 diluted). Predicted band size: 55kDa. Observed band size: 55kDa.