

RPL30 antibody



Catalog Number: 114888

Product name

RPL30 antibody

Immunogen

[Human RPL30 Recombinant protein \(GST tag\)](#)

Specificity

human, mouse, rat; other species not tested.

Antibody description

RPL30 Rabbit Polyclonal antibody. Positive WB detected in A549 cells, HeLa cells, Jurkat cells, MCF7 cells. Observed molecular weight by Western-blot: 13kd

Preparation

This antibody was obtained by immunization of RPL30 recombinant protein (Accession Number: NM_000989). Purification method: Antigen affinity purified.

Formulation

PBS with 0.02% sodium azide and 50% glycerol pH 7.3.

Storage

Store at -20°C. DO NOT ALIQUOT

Clonality

Polyclonal

Ig Type

Rabbit IgG

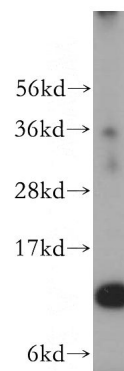
Applications

ELISA, WB

Dilutions

Recommended Dilution:
WB: 1:500-1:5000

Validations



A549 cells were subjected to SDS PAGE followed by western blot with Catalog No:114888(RPL30 antibody) at dilution of 1:500