

# Mouse Ldha/Ldh-1/Ldh1 (His tag) recombinant protein



Catalog Number: 519488

## General Information

### Gene Name Synonym

LDHA/Ldh1/L-lactate dehydrogenase

### Protein Construction

A DNA sequence encoding the Mouse Ldha/Ldh-1/Ldh1 Met1-Phe332 is expressed with a 6His tag at the C-terminus.

### Organism

Mouse

### Expression Host

Human Cells

## QC Testing

### Purity

>95% as determined by SDS-PAGE.

### Endotoxin

<1.0 EU per  $\mu\text{g}$  protein as determined by the LAL method.

## Stability

Store for up to 6 months at  $-20^{\circ}\text{C}$

## Formulation

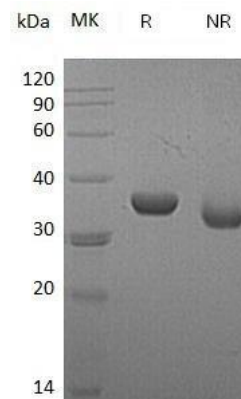
Supplied as a  $0.2\ \mu\text{m}$  filtered solution of 20mM PB, 150mM NaCl, pH7.4.

## Usage Guide

### Storage

Store at  $<-20^{\circ}\text{C}$ , minimize freeze-thaw cycles.

## SDS-PAGE



Mouse Ldha/Ldh-1/Ldh1 (His tag) recombinant protein