

Anti-KDM1/LSD1 (1B2) Mouse antibody



Catalog Number: 168488

Product name

Mouse IgG1

Anti-KDM1/LSD1 (1B2) Mouse antibody

Applications

Specificity

WB, IHC-P

Human, Mouse, Monkey

Dilutions

Antibody description

WB: 1/500 - 1/2000

KDM1/LSD1 (1B2) Mouse monoclonal antibody

IHC: 1/200 - 1/1000

Preparation

ELISA: 1/10000

Antigen: Purified recombinant fragment of human LSD1 expressed in E. Coli.

Validations

Formulation

Ascitic fluid containing 0.03% sodium azide.

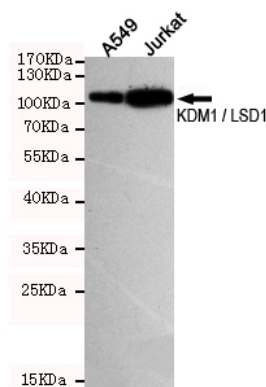
Storage

Store at 4°C short term. Store at -20°C long term. Avoid freeze / thaw cycle.

Clonality

Monoclonal

Ig Type



Western blot detection of KDM1 / LSD1 in A549 and Jurkat cell lysates using KDM1 / LSD1 mouse mAb (dilution 1:500). Predicted band size: 93 Kda. Observed band size: 93KDa.