

# P-selectin antibody



Catalog Number: 107488

## Product name

P-selectin antibody

IP: 1:200-1:2000

IHC: 1:20-1:200

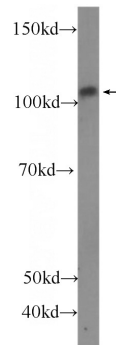
## Specificity

Human; other species not tested.

## Validations

## Antibody description

P-selectin Mouse Monoclonal antibody. Positive IHC detected in human spleen tissue. Positive IP detected in K-562 cells. Positive WB detected in Jurkat cells. Observed molecular weight by Western-blot: 105-110 kDa



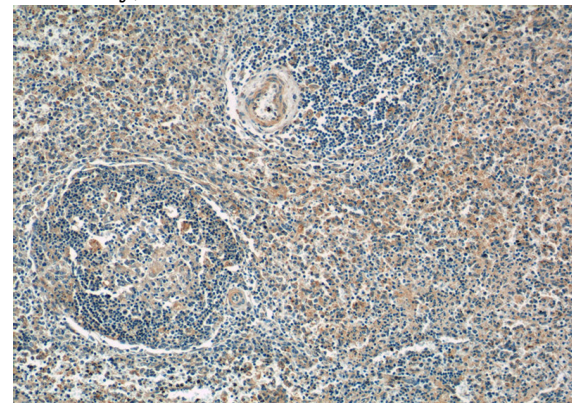
## Preparation

This antibody was obtained by immunization of P-selectin recombinant protein (Accession Number: XM\_005245438). Purification method: Protein A purified.

Jurkat cells were subjected to SDS PAGE followed by western blot with Catalog No:107488(SELP Antibody) at dilution of 1:500

## Formulation

PBS with 0.02% sodium azide and 50% glycerol pH 7.3.



## Storage

Store at -20°C. DO NOT ALIQUOT

## Clonality

Monoclonal

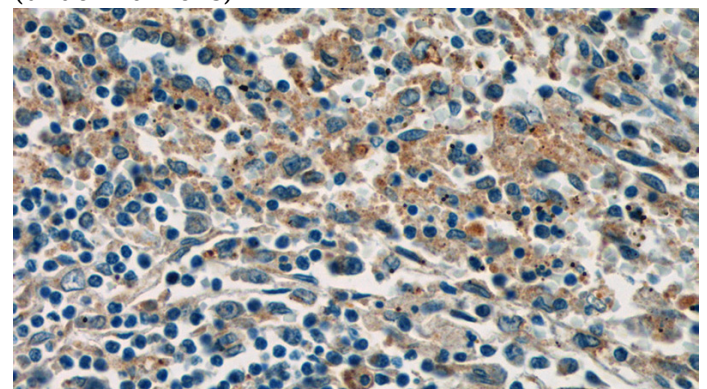
Immunohistochemistry of paraffin-embedded human spleen tissue slide using Catalog No:107488(SELP Antibody) at dilution of 1:50 (under 10x lens)

## Ig Type

Mouse IgG2b

## Applications

ELISA, IHC, WB, IP



## Dilutions

Recommended Dilution:

WB: 1:200-1:2000

Immunohistochemistry of paraffin-embedded

# P-selectin antibody

Catalog Number: 107488

---

human spleen tissue slide using Catalog No:107488(SELP Antibody) at dilution of 1:50 (under 40x lens)

IP Result of anti-SELP (IP:Catalog No:107488, 5ug; Detection:Catalog No:107488 1:600) with K-562 cells lysate 1760ug.

