

Maspin antibody

Catalog Number: 112488

Product name

Maspin antibody

Specificity

Human, Mouse, Rat; other species not tested.

Antibody description

Maspin Rabbit Polyclonal antibody. Positive WB detected in HepG2 cells, A431 cells, HeLa cells. Positive IHC detected in human lung cancer tissue, human breast cancer tissue. Observed molecular weight by Western-blot: 42 kDa

Preparation

This antibody was obtained by immunization of Maspin recombinant protein (Accession Number: BC020713). Purification method: Antigen affinity purified.

Formulation

PBS with 0.02% sodium azide and 50% glycerol pH 7.3.

Storage

Store at -20°C. DO NOT ALIQUOT

Clonality

Polyclonal

Ig Type

Rabbit IgG

Applications

ELISA, WB, IHC

Dilutions

Recommended Dilution:

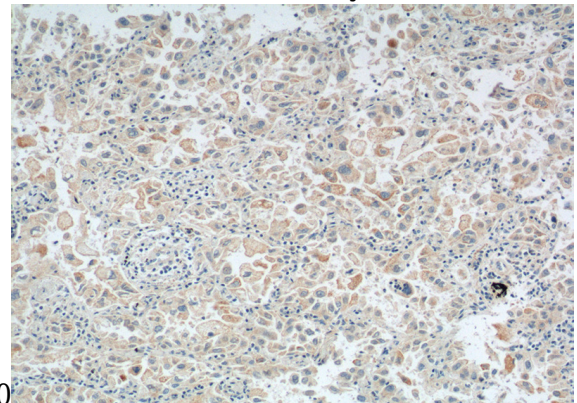
WB: 1:500-1:5000

IHC: 1:50-1:500

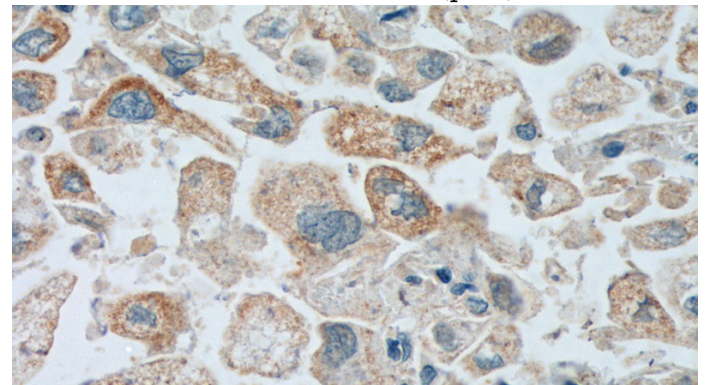
Validations



HepG2 cells were subjected to SDS PAGE followed by western blot with Catalog No:112488(SERPINB5 antibody) at dilution of



1:500 Immunohistochemistry of paraffin-embedded human lung cancer tissue slide using Catalog No:112488(SERPINB5 Antibody) at dilution of 1:200 (under 10x lens). heat mediated antigen retrieved with Tris-EDTA buffer(pH9).



Immunohistochemistry of paraffin-embedded human lung cancer tissue slide using Catalog

Maspin antibody



Catalog Number: 112488

No:112488(SERPINB5 Antibody) at dilution of

1:200 (under 40x lens). heat mediated antigen
retrieved with Tris-EDTA buffer(pH9).