

Cynomolgus NKG2A / NKG2 / CD159A / KLRC1 (Fc Tag) recombinant protein



Catalog Number: 502488

General Information

Gene Name Synonym

NKG2A protein

Protein Construction

A DNA sequence encoding the cynomolgus KLRC1 (Q9MZJ2) (Pro94-Leu233) was expressed with the Fc region of human IgG1 at the N-terminus.

Organism

Cynomolgus

Expression Host

Human Cells

QC Testing

Purity

> 85 % as determined by SDS-PAGE

Endotoxin

< 1.0 EU per µg of the protein as determined by the LAL method

Stability

Samples are stable for up to twelve months from date of receipt at -70°C

Predicted N terminal

Glu

Molecular Mass

The recombinant cynomolgus KLRC1 is a disulfide-linked homodimer. The reduced

monomer comprises 400 amino acids and has a calculated molecular mass of 44.4 KDa. The apparent molecular mass of the protein is approximately 47-55 KDa respectively in SDS-PAGE.

Formulation

Lyophilized from sterile PBS, pH 7.4.

1. 5 % trehalose and mannitol are added as protectants before lyophilization.

2. Please contact us for any concerns or special requirements.

Usage Guide

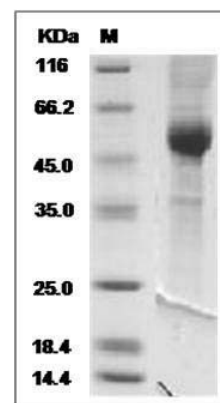
Storage

Store it under sterile conditions at -20°C to -80°C. It is recommended that the protein be aliquoted for optimal storage. Avoid repeated freeze-thaw cycles.

Reconstitution

Adding sterile water, prepare a stock solution of 0.25 mg/ml. Concentration is measured by UV-Vis.

SDS-PAGE



Cynomolgus NKG2A / NKG2 / CD159A / KLRC1 Protein (Fc Tag) SDS-PAGE