

# Glypican 3 antibody



Catalog Number: 111088

## Product name

Glypican 3 antibody

IHC: 1:20-1:200

IF: 1:20-1:200

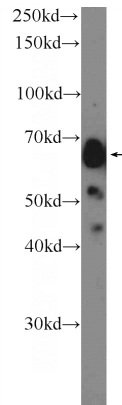
## Specificity

Human; other species not tested.

## Validations

## Antibody description

Glypican 3 Rabbit Polyclonal antibody. Positive WB detected in HepG2 cells. Positive IF detected in HEK-293 cells. Positive IHC detected in human liver cancer tissue. Observed molecular weight by Western-blot: 66 kDa



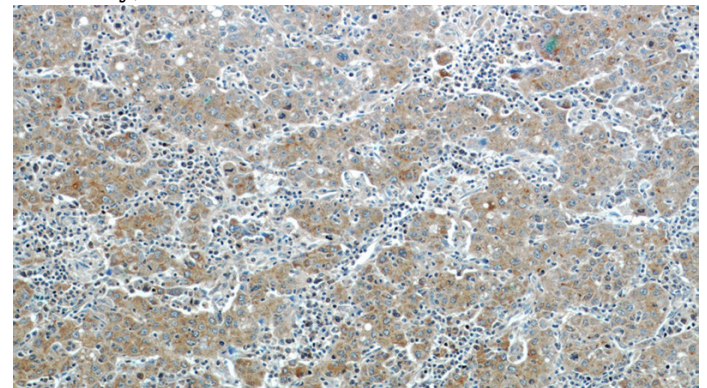
## Preparation

This antibody was obtained by immunization of Glypican 3 recombinant protein (Accession Number: NM\_004484). Purification method: Antigen affinity purified.

HepG2 cells were subjected to SDS PAGE followed by western blot with Catalog No:111088(GPC3 Antibody) at dilution of 1:600

## Formulation

PBS with 0.1% sodium azide and 50% glycerol pH 7.3.



## Storage

Store at -20°C. DO NOT ALIQUOT

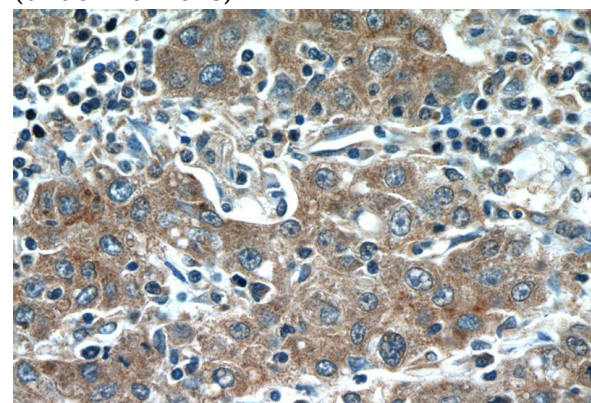
## Clonality

Polyclonal

Immunohistochemistry of paraffin-embedded human liver cancer tissue slide using Catalog No:111088(GPC3 Antibody) at dilution of 1:50 (under 10x lens)

## Ig Type

Rabbit IgG



## Applications

ELISA, IHC, WB, IF

## Dilutions

Recommended Dilution:

WB: 1:200-1:2000

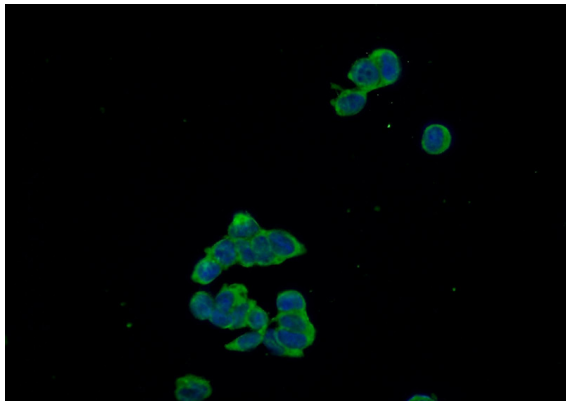
Immunohistochemistry of paraffin-embedded

# Glypican 3 antibody

Catalog Number: 111088

---

human liver cancer tissue slide using Catalog No:111088(GPC3 Antibody) at dilution of 1:50 (under 40x lens)



Immunofluorescent analysis of HEK-293 cells using Catalog No:111088(GPC3 Antibody) at dilution of 1:50 and Alexa Fluor 488-conjugated AffiniPure Goat Anti-Rabbit IgG(H+L)