

MAP3K5 Polyclonal Antibody



Catalog Number: 161088

Product name

MAP3K5 Polyclonal Antibody

Specificity

Human

Antibody description

Polyclonal antibody to MAP3K5

Preparation

Antigen: A synthetic peptide corresponding to a sequence within amino acids 1300 to the C-terminus of human MAP3K5 (NP_005914.1).

Formulation

PBS with 0.02% sodium azide, 50% glycerol, pH7.3.

Storage

Store at -20°C. Avoid freeze / thaw cycles.

Clonality

Polyclonal

Ig Type

Rabbit IgG

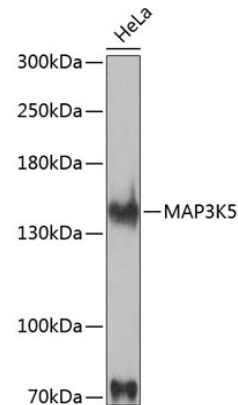
Applications

WB

Dilutions

WB 1:500 - 1:2000

Validations



Western blot - MAP3K5 Polyclonal Antibody

Western blot analysis of extracts of HeLa cells, using MAP3K5 antibody at 1:1000 dilution. Secondary antibody: HRP Goat Anti-Rabbit IgG (H+L) at 1:10000 dilution. Lysates/proteins: 25ug per lane. Blocking buffer: 3% nonfat dry milk in TBST. Detection: ECL Enhanced Kit. Exposure time: 90s.