

Anti-Phospho-Smad3 (Ser423/425) Rabbit antibody



Catalog Number: 168778

Product name

Monoclonal

Anti-Phospho-Smad3 (Ser423/425) Rabbit antibody

Ig Type

Rabbit IgG

Specificity

Human, Mouse, Rat

Applications

WB, ICC/IF

Antibody description

Phospho-Smad3 (Ser423/425) Rabbit monoclonal antibody

Dilutions

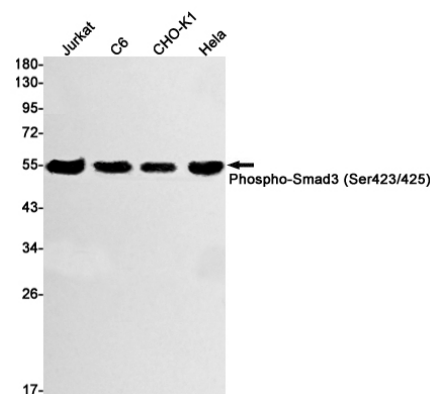
WB: 1/1000

ICC/IF: 1/50

Preparation

Antigen: A synthetic phosphopeptide corresponding to residues surrounding Ser423/Ser425 of human Smad3

Validations



Formulation

Supplied in 50nM Tris-Glycine(pH 7.4), 0.15M NaCl, 40%Glycerol, 0.01% sodium azide and 0.05% BSA.

Western blot detection of Phospho-Smad3 (Ser423/425) in Jurkat,C6,CHO-K1,Hela cell lysates using Phospho-Smad3 (Ser423/425) Rabbit mAb(1:1000 diluted).Predicted band size:48kDa.Observed band size:52kDa.

Storage

Store at 4°C short term. Aliquot and store at -20°C long term. Avoid freeze / thaw cycle.

Clonality