

# Anti-S6K1 Rabbit antibody



Catalog Number: 166778

## Product name

Anti-S6K1 Rabbit antibody

## Specificity

Human, Mouse, Rat

## Antibody description

S6K1 Rabbit polyclonal antibody

## Preparation

Antigen: A synthesized peptide derived from human p70 S6 Kinase

## Formulation

Rabbit IgG in phosphate buffered saline , pH 7.4, 150mM NaCl, 0.02% sodium azide and 50% glycerol.

## Storage

Store at 4°C short term. Store at -20°C long term. Avoid freeze / thaw cycle.

## Clonality

Polyclonal

## Ig Type

Rabbit IgG

## Applications

WB, IHC-P, ICC/IF, IP, FC

## Dilutions

WB: 1/1000-1/2000

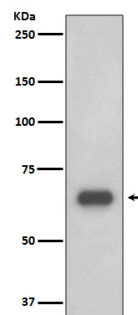
IHC: 1/50-1/200

ICC/IF: 1/100-1/500

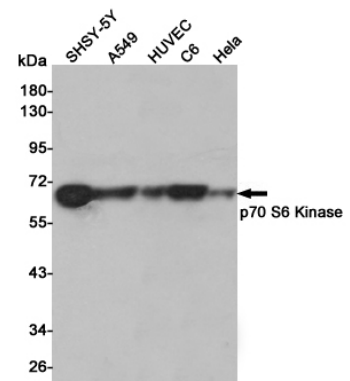
IP: 1/50

FC: 1/100

## Validations



Western blot analysis of p70 S6 Kinase expression



in 293T cell lysate.

Western blot analysis of p70 S6 Kinase expression in SHSY-5Y,A549,HUVEC,C6 and HeLa cell lysates using p70 S6 Kinase antibody at 1/1000 dilution.Predicted band size:70KDa.Observed band size:70KDa.