

General Information

Protein Construction

A DNA sequence encoding the mouse CRP (NP_031794.3) (Met 1-Ser 225) was expressed, with a C-terminal polyhistidine tag.

Organism

Mouse

Expression Host

Human Cells

QC Testing

Purity

> 94 % as determined by SDS-PAGE

Endotoxin

< 1.0 EU per μg of the protein as determined by the LAL method

Stability

Samples are stable for up to twelve months from date of receipt at -70°C

Predicted N terminal

Glu 21

Molecular Mass

The secreted recombinant mouse CRP consists of 216 amino acids and has a calculated molecular mass of 24.4 kDa. As a result of glycosylation, the apparent molecular mass of rmCRP is

approximately 30 kDa in SDS-PAGE under reducing conditions.

Formulation

Lyophilized from sterile PBS, pH 7.4

1. 5 % trehalose and mannitol are added as protectants before lyophilization.

2. Please contact us for any concerns or special requirements.

Usage Guide

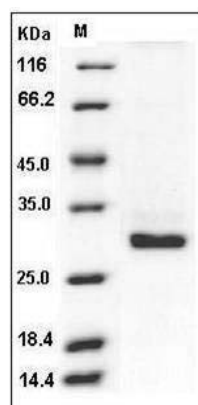
Storage

Store it under sterile conditions at -20°C to -80°C . It is recommended that the protein be aliquoted for optimal storage. Avoid repeated freeze-thaw cycles.

Reconstitution

Adding sterile water, prepare a stock solution of 0.25 mg/ml. Concentration is measured by UV-Vis.

SDS-PAGE



Mouse CRP / C-Reactive Protein (His Tag) SDS-PAGE