

# SLC44A1 antibody



Catalog Number: 115378

## Product name

SLC44A1 antibody

## Specificity

Human, Mouse, Rat; other species not tested.

## Antibody description

SLC44A1 Rabbit Polyclonal antibody. Positive WB detected in COLO 320 cells, A549 cells, human skeletal muscle tissue, K-562 cells, MCF7 cells, mouse brain tissue, U-937 cells. Observed molecular weight by Western-blot: 70 kDa-73 kDa, 50 kDa-55 kDa

## Preparation

This antibody was obtained by immunization of SLC44A1 recombinant protein (Accession Number: NM\_080546). Purification method: Antigen affinity purified.

## Formulation

PBS with 0.02% sodium azide and 50% glycerol pH 7.3.

## Storage

Store at -20°C. DO NOT ALIQUOT

## Clonality

Polyclonal

## Ig Type

Rabbit IgG

## Applications

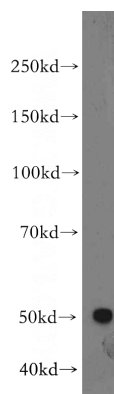
ELISA, WB

## Dilutions

Recommended Dilution:

WB: 1:500-1:5000

## Validations



COLO 320 cells were subjected to SDS PAGE followed by western blot with Catalog No:115378(SLC44A1 antibody) at dilution of 1:500