

# Anti-GAS2 antibody



Catalog Number: 142378

## Product name

Anti-GAS2 antibody

## Specificity

Human GAS2

## Antibody description

Rabbit Polyclonal to Human GAS2

## Preparation

Produced in rabbits immunized with a synthetic peptide corresponding to the N-terminus of the Human GAS2, and purified by antigen affinity chromatography.

## Formulation

0.2 µm filtered solution in PBS

## Storage

This antibody can be stored at 2°C-8°C for one month without detectable loss of activity. Antibody products are stable for twelve months from date of receipt when stored at -20°C to -80°C.

Preservative-Free.

Sodium azide is recommended to avoid contamination (final concentration 0.05%-0.1%). It is toxic to cells and should be disposed of properly. Avoid repeated freeze-thaw cycles.

## Clonality

Polyclonal

## Ig Type

Rabbit IgG

## Applications

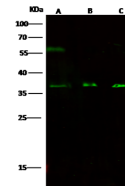
WB

## Dilutions

WB: 5-20 µg/ml

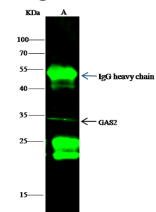
IP: 4-8 uL/mg of lysate

## Validations



Lanes	A	B	C
Items			
Sample (whole cell lysate)	HepG2	HeLa	Jurkat
Sample Volume (µg/lane)	30	30	30
Gel	13% SDS-PAGE reducing gel		
Recommended Concentration	5-20 µg/ml		
Secondary Antibody	Dylight 800-labeled Antibody to Rabbit IgG (H+L), at 1:5000 dilution.		
Explanation	Developed using Odyssey imaging system. Predicted band size : 35 kDa Observed band size : 35 kDa Additional bands at : 57 kDa(We are unsure as to the identity of these extra bands.)		

## GAS2 Antibody, Rabbit PAb, Antigen Affinity



Lane	A
Items	
Sample (whole cell lysate)	293T
Sample quantity	0.5 mg
IP antibody quantity	4 µL
Immunomagnetic beads Protein A	60 µg
Gel	13% SDS-PAGE reducing gel
Primary antibody	KLJ1-SMCC-simoA922+KLJ1-SMCC-simoA1192 antibody at 10 µg/ml
Secondary antibody	Dylight 800-labeled antibody to rabbit IgG (H+L), at 1:5000 dilution

Purified, Western blot

## GAS2 Antibody, Rabbit PAb, Antigen Affinity

Purified, Immunoprecipitation