

Anti-E cadherin Rabbit antibody



Catalog Number: 166678

Product name

Anti-E cadherin Rabbit antibody

WB: 1/500 - 1/2000

IHC: 1/100 - 1/300

Specificity

Human, Mouse, Rat

IF: 1/200 - 1/1000

ELISA: 1/20000

Antibody description

E cadherin Rabbit polyclonal antibody

Validations

Preparation

Antigen: The antiserum was produced against synthesized peptide derived from human Cadherin. AA range:833-882

Formulation

Liquid in PBS containing 50% glycerol, 0.5% BSA and 0.02% sodium azide.

Storage

Store at 4°C short term. Store at -20°C long term. Avoid freeze / thaw cycle.

Clonality

Polyclonal

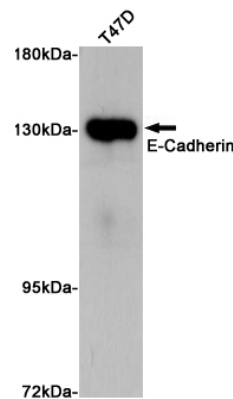
Ig Type

Rabbit IgG

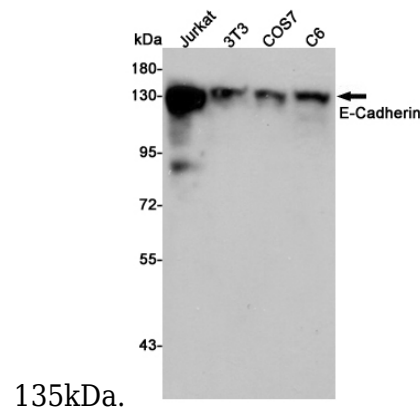
Applications

WB, IHC-P, ICC/IF, ELISA

Dilutions



Western blot analysis of extract from T47D cells using E-Cadherin Rabbit pAb at 1:1000 dilution. Predicted band size: 135kDa. Observed band size:



135kDa. Western blot detection of E-Cadherin in Jurkat, 3T3, COS7 and C6 cell lysates using E-Cadherin rabbit pAb (1:1000 diluted). Predicted band size: 135kDa. Observed band size: 135kDa.