

REDD1 specific antibody



Catalog Number: 114678

Product name

REDD1 specific antibody

Immunogen

[Human REDD1 Recombinant protein \(N/A\)](#)

Specificity

Human, Mouse, Rat; other species not tested.

Antibody description

REDD1 specific Rabbit Polyclonal antibody. Positive IHC detected in human lung cancer tissue, human breast cancer tissue, human gliomas tissue, human heart tissue, human kidney tissue, human liver tissue, human pancreas cancer tissue, human placenta tissue, human spleen tissue, human testis tissue. Positive IP detected in MCF-7 cells. Positive WB detected in K-562 cells, A549 cells, DU 145 cells, LNCaP cells, MCF7 cells, PC-3 cells, Raji cells. Observed molecular weight by Western-blot: 35 kDa

Preparation

This antibody was obtained by immunization of REDD1 specific recombinant protein (Accession Number: NM_019058). Purification method: Antigen affinity purified.

Formulation

PBS with 0.1% sodium azide and 50% glycerol pH 7.3.

Storage

Store at -20°C. DO NOT ALIQUOT

Clonality

Polyclonal

Ig Type

Rabbit IgG

Applications

ELISA, IHC, IP, WB

Dilutions

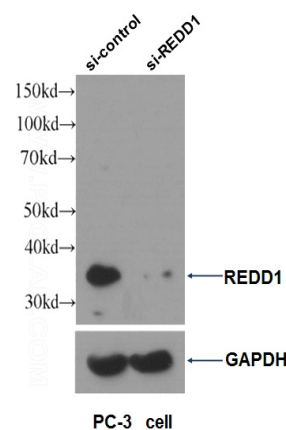
Recommended Dilution:

WB: 1:500-1:5000

IP: 1:200-1:2000

IHC: 1:20-1:200

Validations



WB result of REDD1 antibody (Catalog No:114678, 1:1000) with si-control and si-REDD1

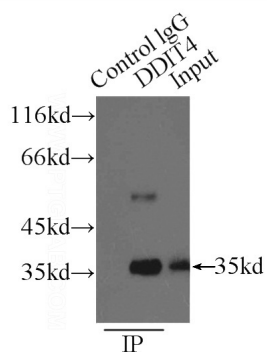


transfected PC-3 cells.

K-562 cells were subjected to SDS PAGE followed by western blot with Catalog No:114678(REDD1 antibody) at dilution of 1:1000

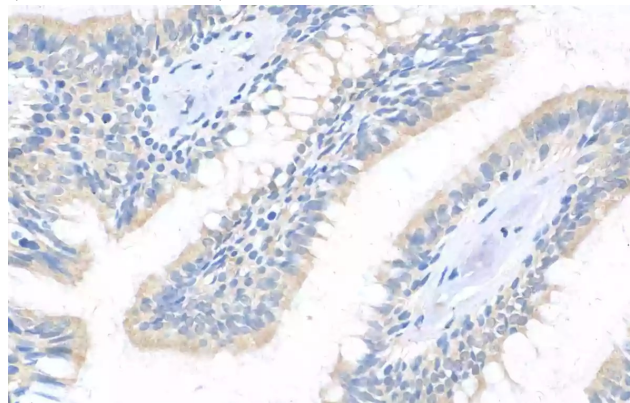
REDD1 specific antibody

Catalog Number: 114678



IP Result of anti-REDD1 (IP:Catalog No:114678, 3ug; Detection:Catalog No:114678 1:500) with MCF-7 cells lysate 2500ug.

Immunohistochemical of paraffin-embedded human lung cancer using Catalog No:114678(REDD1 antibody) at dilution of 1:50 (under 10x lens)



Immunohistochemical of paraffin-embedded human lung cancer using Catalog No:114678(REDD1 antibody) at dilution of 1:50 (under 40x lens)

