

# RPL6 Polyclonal Antibody



Catalog Number: 164678

## Product name

RPL6 Polyclonal Antibody

## Specificity

Human

## Antibody description

Polyclonal antibody to RPL6

## Preparation

Antigen: A synthetic peptide of human RPL6

## Formulation

PBS with 0.02% sodium azide, pH7.3.

## Storage

Store at 4°C. Avoid freeze / thaw cycles.

## Clonality

Polyclonal

## Ig Type

Rabbit IgG

## Applications

WB, IHC, IF, FC

## Dilutions

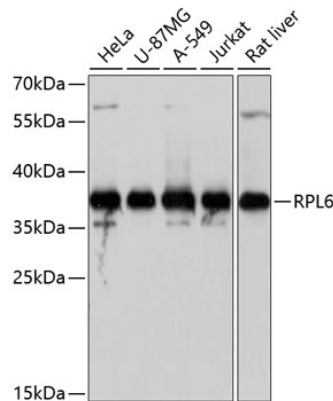
WB 1:500 - 1:2000

IHC 1:50 - 1:200

IF 1:20 - 1:50

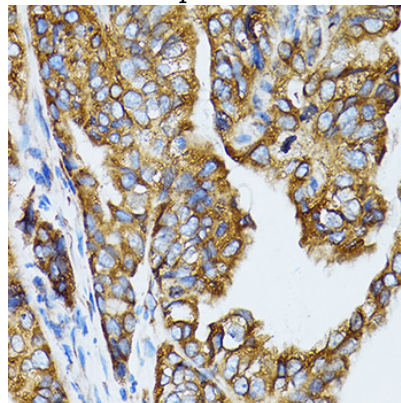
FC 1:20 - 1:50

## Validations



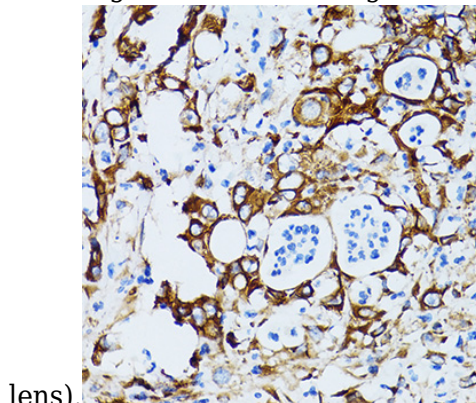
Western blot - RPL6 Polyclonal Antibody

Western blot analysis of extracts of various cell lines, using RPL6 antibody at 1:1000 dilution. Secondary antibody: HRP Goat Anti-Rabbit IgG (H+L) at 1:10000 dilution. Lysates/proteins: 25ug per lane. Blocking buffer: 3% nonfat dry milk in TBST. Detection: ECL Basic Kit. Exposure time: 1s.



Immunohistochemistry - RPL6 Polyclonal Antibody

Immunohistochemistry of paraffin-embedded human gastric cancer using RPL6 antibody (40x



# RPL6 Polyclonal Antibody



Catalog Number: 164678

---

Immunohistochemistry - RPL6 Polyclonal Antibody human uterine cancer using RPL6 antibody (40x lens).  
Immunohistochemistry of paraffin-embedded