

PDHA1 antibody

Catalog Number: 113678

Product name

PDHA1 antibody

Specificity

Human, Mouse, Rat; other species not tested.

Antibody description

PDHA1 Rabbit Polyclonal antibody. Positive IHC detected in human heart tissue, human brain tissue, human kidney tissue, human lung tissue, human ovary tissue, human placenta tissue, human skin tissue, human spleen tissue, human testis tissue. Positive IF detected in HepG2 cells. Positive IP detected in mouse kidney tissue. Positive WB detected in mouse brain tissue, HeLa cells, mouse skeletal muscle tissue, rat brain tissue. Observed molecular weight by Western-blot: 43 kDa

Preparation

This antibody was obtained by immunization of PDHA1 recombinant protein (Accession Number: NM_000284). Purification method: Antigen affinity purified.

Formulation

PBS with 0.02% sodium azide and 50% glycerol pH 7.3.

Storage

Store at -20°C. DO NOT ALIQUOT

Clonality

Polyclonal

Ig Type

Rabbit IgG

Applications

ELISA, WB, IHC, IF, IP

Dilutions

Recommended Dilution:

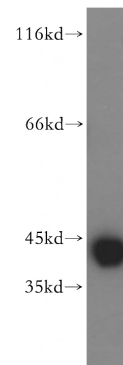
WB: 1:1000-1:10000

IP: 1:500-1:5000

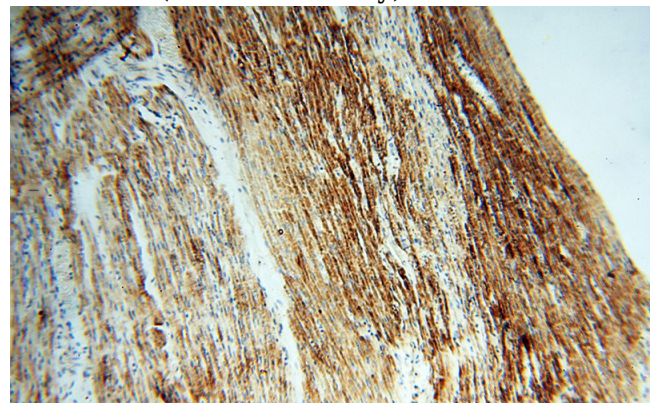
IHC: 1:20-1:200

IF: 1:10-1:100

Validations



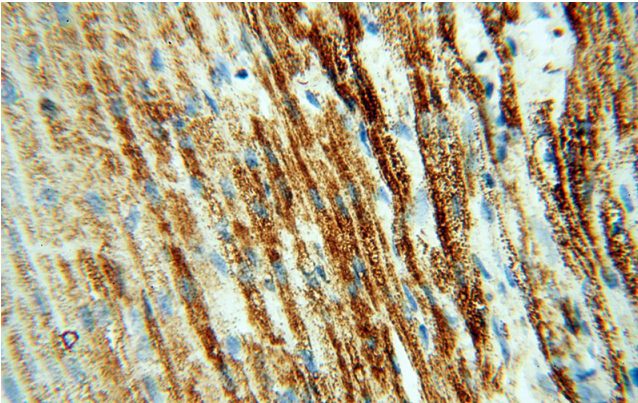
mouse brain tissue were subjected to SDS PAGE followed by western blot with Catalog No:113678(PDHA1 antibody) at dilution of 1:500



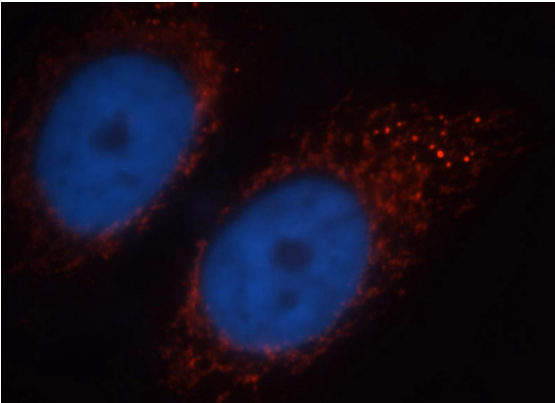
Immunohistochemical of paraffin-embedded human heart using Catalog No:113678(PDHA1 antibody) at dilution of 1:100 (under 10x lens)

PDHA1 antibody

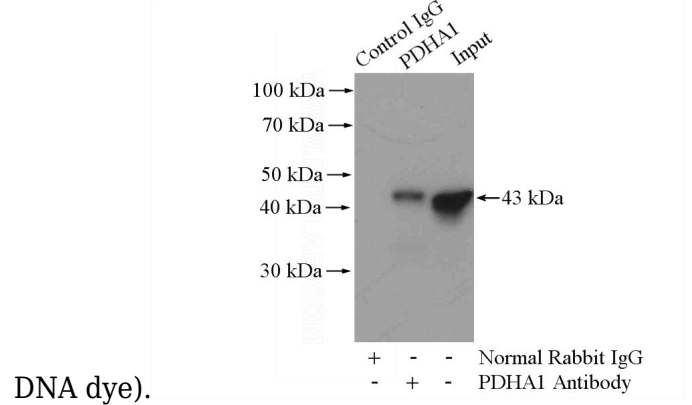
Catalog Number: 113678



Immunohistochemical of paraffin-embedded human heart using Catalog No:113678(PDHA1 antibody) at dilution of 1:100 (under 40x lens)



Immunofluorescent analysis of HepG2 cells, using PDHA1 antibody Catalog No:113678 at 1:25 dilution and Rhodamine-labeled goat anti-rabbit IgG (red).Blue pseudocolor = DAPI (fluorescent



DNA dye).

IP Result of anti-PDHA1 (IP:Catalog No:113678, 4ug; Detection:Catalog No:113678 1:1000) with mouse kidney tissue lysate 4400ug.