

## General Information

### Gene Name Synonym

B-lymphocyte cell adhesion molecule; Sialic acid-binding Ig-like lectin 2; T-cell surface antigen Leu-14

### Protein Construction

A DNA sequence encoding the human CD22 isoform-beta (P20273-1) extracellular domain (Met 1-Arg 687) was fused with a polyhistidine tag at the C-terminus.

### Organism

Human

### Expression Host

Human Cells

## QC Testing

### Purity

> 95 % as determined by SDS-PAGE

### Endotoxin

< 1.0 EU per  $\mu\text{g}$  of the protein as determined by the LAL method

### Stability

Samples are stable for up to twelve months from date of receipt at  $-70^{\circ}\text{C}$

### Predicted N terminal

Asp 20

## Molecular Mass

The recombinant human CD22 consists of 679 amino acids and predicts a molecular mass of 76.6 kDa.

### Formulation

Lyophilized from sterile PBS, pH 7.4

1. 5 % trehalose and mannitol are added as protectants before lyophilization.

2. Please contact us for any concerns or special requirements.

## Usage Guide

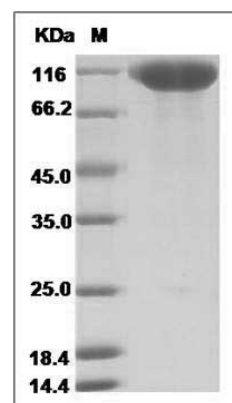
### Storage

Store it under sterile conditions at  $-20^{\circ}\text{C}$  to  $-80^{\circ}\text{C}$ . It is recommended that the protein be aliquoted for optimal storage. Avoid repeated freeze-thaw cycles.

### Reconstitution

Adding sterile water, prepare a stock solution of 0.25 mg/ml. Concentration is measured by UV-Vis.

### SDS-PAGE



Human Siglec-2 / CD22 Protein (His Tag) SDS-PAGE