

SLC16A4 Polyclonal Antibody



Catalog Number: 162278

Product name

SLC16A4 Polyclonal Antibody

Specificity

Human, Rat

Antibody description

Polyclonal antibody to SLC16A4

Preparation

Antigen: A synthetic peptide corresponding to a sequence within amino acids 250-350 of human SLC16A4 (NP_004687.1).

Formulation

PBS with 0.02% sodium azide, 50% glycerol, pH7.3.

Storage

Store at -20°C. Avoid freeze / thaw cycles.

Clonality

Polyclonal

Ig Type

Rabbit IgG

Applications

WB, IHC, IF

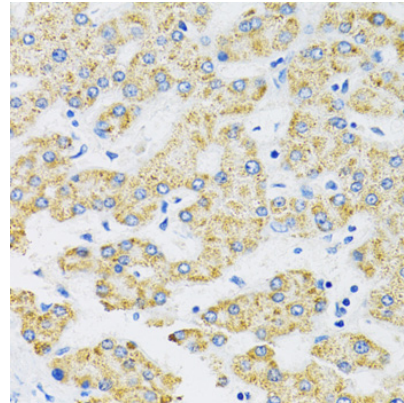
Dilutions

WB 1:500 - 1:2000

IHC 1:50 - 1:200

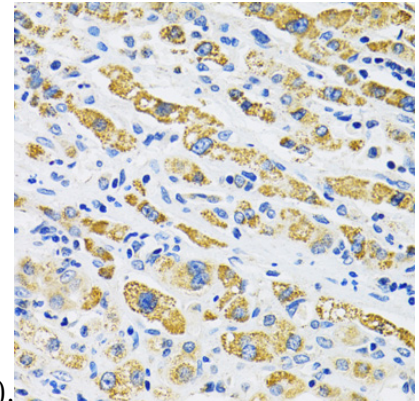
IF 1:50 - 1:200

Validations



Immunohistochemistry - SLC16A4 Polyclonal Antibody

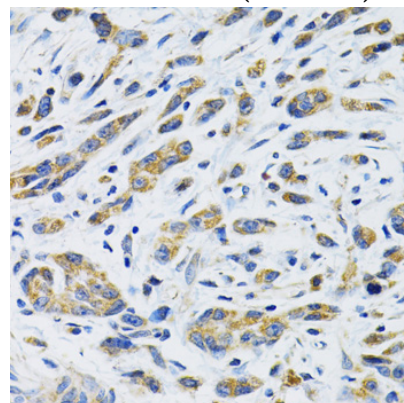
Immunohistochemistry of paraffin-embedded human liver using SLC16A4 antibody at dilution of



1:100 (40x lens).

Immunohistochemistry - SLC16A4 Polyclonal Antibody

Immunohistochemistry of paraffin-embedded human liver cancer using SLC16A4 antibody at dilution of 1:100 (40x lens).



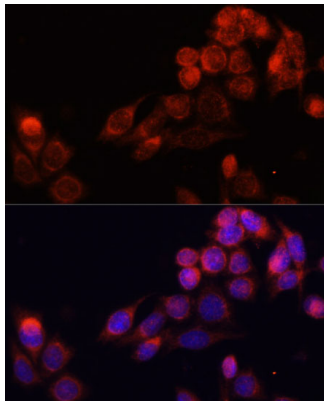
Immunohistochemistry - SLC16A4 Polyclonal Antibody

SLC16A4 Polyclonal Antibody



Catalog Number: 162278

Immunohistochemistry of paraffin-embedded human gastric cancer using SLC16A4 antibody at dilution of 1:100 (40x lens).



Immunofluorescence - SLC16A4 Polyclonal Antibody

Immunofluorescence analysis of HeLa cells using SLC16A4 antibody at dilution of 1:100. Blue: DAPI for nuclear staining.