

# Aldolase C antibody



Catalog Number: 107978

## Product name

Aldolase C antibody

## Specificity

Human, Mouse, Rat; other species not tested.

## Antibody description

Aldolase C Rabbit Polyclonal antibody. Positive WB detected in mouse cerebellum tissue, human heart tissue, K-562 cells, mouse brain tissue. Positive IF detected in HepG2 cells. Observed molecular weight by Western-blot: 40kd

## Preparation

This antibody was obtained by immunization of Aldolase C recombinant protein (Accession Number: NM\_005165). Purification method: Antigen affinity purified.

## Formulation

PBS with 0.02% sodium azide and 50% glycerol pH 7.3.

## Storage

Store at -20°C. DO NOT ALIQUOT

## Clonality

Polyclonal

## Ig Type

Rabbit IgG

## Applications

ELISA, WB, IF

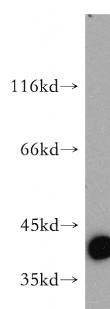
## Dilutions

Recommended Dilution:

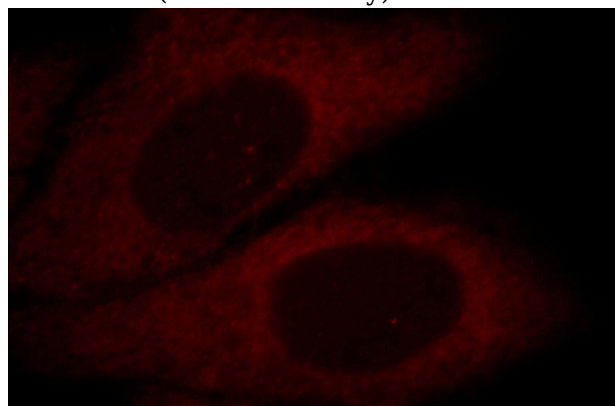
WB: 1:500-1:5000

IF: 1:10-1:100

## Validations



mouse cerebellum tissue were subjected to SDS PAGE followed by western blot with Catalog No:107978(ALDoc antibody) at dilution of 1:800



Immunofluorescent analysis of HepG2 cells, using ALDoc antibody Catalog No:107978 at 1:25 dilution and Rhodamine-labeled goat anti-rabbit IgG (red).