

# CRP antibody

Catalog Number: 109578

## Product name

CRP antibody

## Specificity

Human, Mouse; other species not tested.

## Antibody description

CRP Rabbit Polyclonal antibody. Positive IHC detected in human liver tissue. Positive WB detected in serum from mouse injected with bacteria. Observed molecular weight by Western-blot: 25 kDa

## Preparation

This antibody was obtained by immunization of CRP recombinant protein (Accession Number: NM\_000567). Purification method: Antigen Affinity purified.

## Formulation

PBS with 0.02% sodium azide and 50% glycerol pH 7.3.

## Storage

Store at -20°C. DO NOT ALIQUOT

## Clonality

Polyclonal

## Ig Type

Rabbit IgG

## Applications

ELISA, WB, IHC

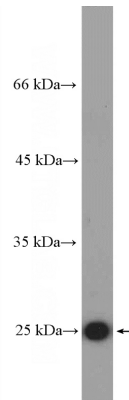
## Dilutions

Recommended Dilution:

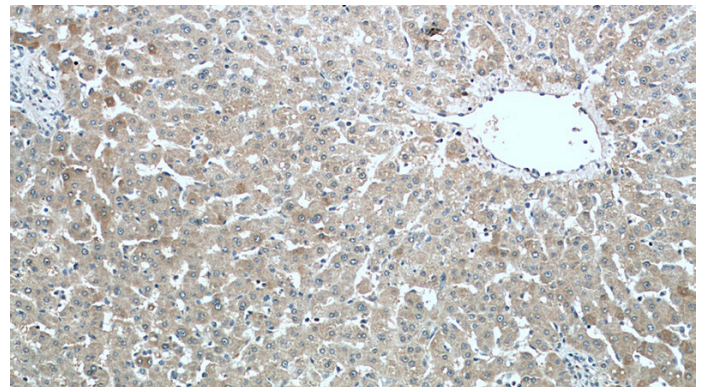
WB: 1:200-1:2000

IHC: 1:50-1:500

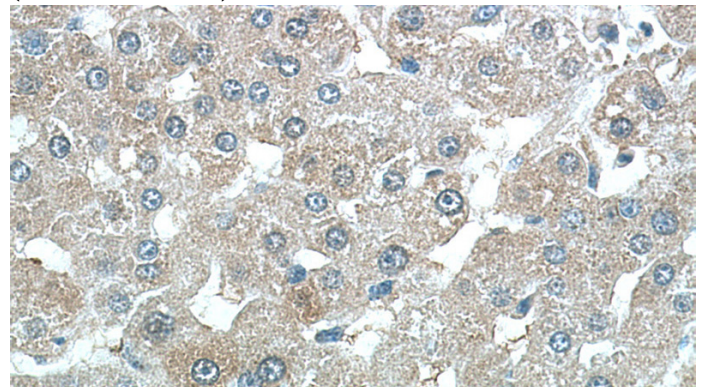
## Validations



Serum from mouse injected with bacteria were subjected to SDS PAGE followed by western blot with Catalog No:109578(CRP Antibody) at dilution of 1:600



Immunohistochemistry of paraffin-embedded human liver tissue slide using Catalog No:109578(CRP Antibody) at dilution of 1:200 (under 10x lens).



Immunohistochemistry of paraffin-embedded human liver tissue slide using Catalog

# CRP antibody



Catalog Number: 109578

---

No:109578(CRP Antibody) at dilution of 1:200 (under 40x lens).