

Anti-XRCC1 Rabbit antibody



Catalog Number: 167578

Product name

Anti-XRCC1 Rabbit antibody

Specificity

Human, Mouse, Rat

Antibody description

XRCC1 Rabbit monoclonal antibody

Preparation

Antigen: A synthetic peptide of human XRCC1

Formulation

50nM Tris-Glycine(pH 7.4), 0.15M NaCl,
40%Glycerol, 0.01% sodium azide and 0.05% BSA

Storage

Store at 4°C short term. Store at -20°C long term.
Avoid freeze / thaw cycle.

Clonality

Monoclonal

Ig Type

Rabbit IgG

Applications

WB, IHC-P, ICC/IF

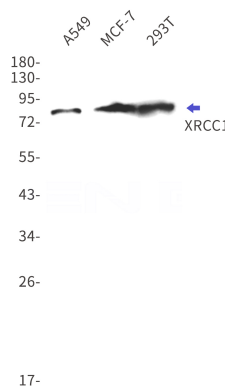
Dilutions

WB: 1/1000

IHC: 1/50

ICC/IF: 1/50

Validations



Western blot detection of XRCC1 in A549, MCF-7, 293T cell lysates using XRCC1 Rabbit mAb(1:1000 diluted). Predicted band size: 70kDa. Observed band size: 82kDa.