

# PAPSS1 antibody



Catalog Number: 113578

## Product name

PAPSS1 antibody

IP: 1:500-1:5000

IHC: 1:20-1:200

## Specificity

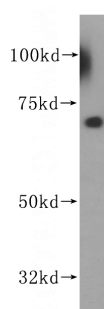
Human, Mouse, Rat; other species not tested.

IF: 1:20-1:200

## Validations

## Antibody description

PAPSS1 Rabbit Polyclonal antibody. Positive IHC detected in human ovary tumor tissue. Positive IF detected in HepG2 cells. Positive WB detected in HepG2 cells, Jurkat cells. Positive IP detected in HepG2 cells. Observed molecular weight by Western-blot: 70 kDa



## Preparation

This antibody was obtained by immunization of PAPSS1 recombinant protein (Accession Number: NM\_005443). Purification method: Antigen affinity purified.

HepG2 cells were subjected to SDS PAGE followed by western blot with Catalog No:113578(PAPSS1 antibody) at dilution of 1:500

## Formulation

PBS with 0.02% sodium azide and 50% glycerol pH 7.3.

## Storage

Store at -20°C. DO NOT ALIQUOT

## Clonality

Polyclonal

## Ig Type

Rabbit IgG

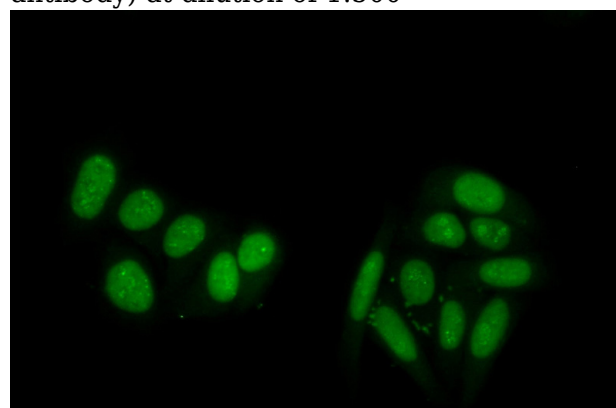
## Applications

ELISA, IHC, IP, IF, WB

## Dilutions

Recommended Dilution:

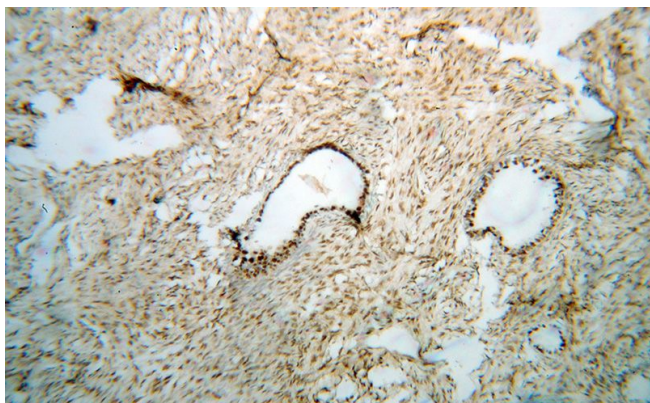
WB: 1:200-1:2000



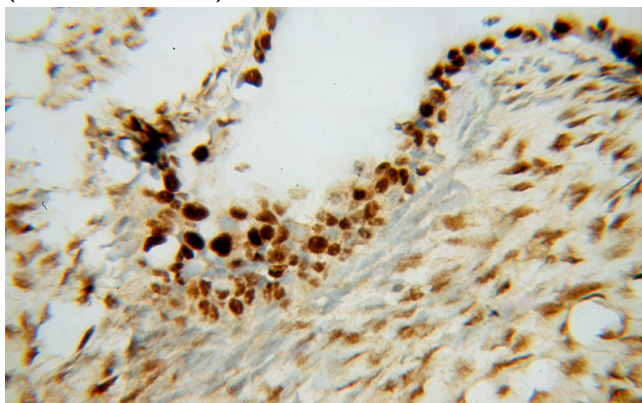
Immunofluorescent analysis of (10% Formaldehyde) fixed HepG2 cells using Catalog No:113578(PAPSS1 Antibody) at dilution of 1:50 and Alexa Fluor 488-conjugated AffiniPure Goat Anti-Rabbit IgG(H+L)

# PAPSS1 antibody

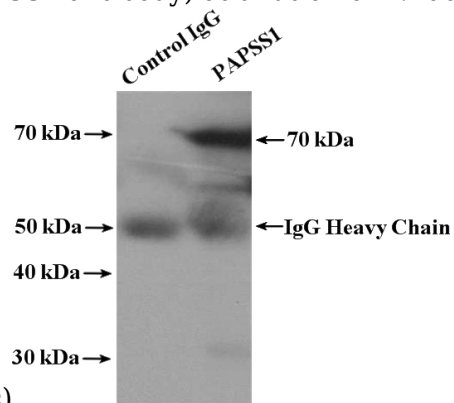
Catalog Number: 113578



Immunohistochemical of paraffin-embedded human ovary tumor using Catalog No:113578(PAPSS1 antibody) at dilution of 1:100 (under 10x lens)



Immunohistochemical of paraffin-embedded human ovary tumor using Catalog No:113578(PAPSS1 antibody) at dilution of 1:100



(under 40x lens)

IP Result of anti-PAPSS1 (IP:Catalog No:113578, 4ug; Detection:Catalog No:113578 1:1000) with HepG2 cells lysate 1000ug.