

Human RHEB / RHEB2 (His Tag) recombinant protein



Catalog Number: 501578

General Information

Gene Name Synonym

Ras homolog enriched in brain

Protein Construction

A DNA sequence encoding the human RHEB (Q15382)(Met1-Cys181) was fused with a polyhistidine tag at the N-terminus.

Organism

Human

Expression Host

Baculovirus-Insect Cells

QC Testing

Purity

> 85 % as determined by SDS-PAGE

Endotoxin

< 1.0 EU per µg of the protein as determined by the LAL method

Stability

Samples are stable for up to twelve months from date of receipt at -70°C

Predicted N terminal

His

Molecular Mass

The recombinant human RHEB consists of 199

amino acids and has a calculated molecular mass of 22.4 kDa. The recombinant protein migrates as an approximately 21 kDa band in SDS-PAGE under reducing conditions.

Formulation

Lyophilized from sterile 20mM Tris, 500mM NaCl, 10% gly, pH 7.4.

1. 5 % trehalose and mannitol are added as protectants before lyophilization.

2. Please contact us for any concerns or special requirements.

Usage Guide

Storage

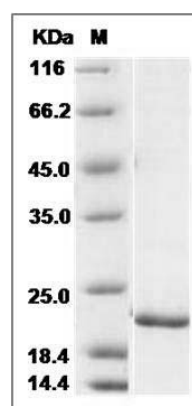
Store it under sterile conditions at -20°C to -80°C.

It is recommended that the protein be aliquoted for optimal storage. Avoid repeated freeze-thaw cycles.

Reconstitution

Adding sterile water, prepare a stock solution of 0.25 mg/ml. Concentration is measured by UV-Vis.

SDS-PAGE



Human RHEB Protein (His Tag) SDS-PAGE