

Anti-CCR2 antibody



Catalog Number: 101578

Product name

Anti-CCR2 antibody

Specificity

Human CCR2/cd192

Antibody description

Rabbit polyclonal to CCR2

Preparation

Produced in rabbits immunized with a synthetic peptide corresponding to the N-terminus of the Human CCR2/cd192, and purified by antigen affinity chromatography.

Formulation

0.2 µm filtered solution in PBS

Storage

This antibody can be stored at 2°C-8°C for one month without detectable loss of activity. Antibody products are stable for twelve months from date of receipt when stored at -20°C to -80°C.

Preservative-Free.

Sodium azide is recommended to avoid contamination (final concentration 0.05%-0.1%). It is toxic to cells and should be disposed of properly. Avoid repeated freeze-thaw cycles.

Clonality

Polyclonal

Ig Type

Rabbit IgG

Applications

WB, IP

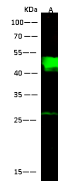
Dilutions

WB: 0.5-10 µg/ml

IHC-P: 0.1-2 µg/mL

IP: 4-6 uL/mg of lysate

Validations



Items	Lanes
Sample (Membrane, lysate)	A#31
Sample Volume (µg/lane)	30
Gel	12% SDS-PAGE reducing gel
Recommended Concentration	0.5-10µg/ml
Secondary Antibody	Dylight 800-labeled Antibody to Rabbit IgG (1:1k) at 1:500 dilution
Developed using Odyssey imaging system.	
Explanation	Predicted band size :42 kDa Observed band size :48 kDa Additional bands at : 27 kDa (We are unsure as to the identity of these extra bands. They are possible non-specific bindings).

CCR2 / cd192 Antibody, Rabbit PAb, Antigen Affinity Purified, Western blot