

# Anti-PLIN5 antibody



Catalog Number: 175178

## Product name

Anti-PLIN5 antibody

## Specificity

Human, Mouse

## Antibody description

Rabbit polyclonal antibody to PLIN5

## Preparation

This antigen of this antibody was recombinant protein corresponding to n-terminal human perilipin-5.

## Formulation

Liquid, 1\*PBS (pH7.4), 0.2% BSA, 50% Glycerol.  
Preservative: 0.05% Sodium Azide.

## Storage

Store at +4°C after thawing. Aliquot store at -20°C. Avoid repeated freeze / thaw cycles.

## Clonality

Polyclonal

## Ig Type

Rabbit IgG

## Applications

WB, IHC-P, FC

## Dilutions

WB: 1:500-1:1,000

IHC-P: 1:50-1:200

FC: 1:50-1:100

## Validations

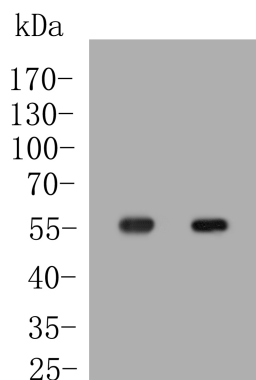


Fig1:: Western blot analysis of Perilipin-5 on different lysates. Proteins were transferred to a PVDF membrane and blocked with 5% BSA in PBS for 1 hour at room temperature. The primary antibody ( 1/500) was used in 5% BSA at room temperature for 2 hours. Goat Anti-Rabbit IgG - HRP Secondary Antibody (HA1001) at 1:5,000 dilution was used for 1 hour at room temperature.; Positive control;; Lane 1: Human liver tissue lysate; Lane 2: Human marrow tissue lysate

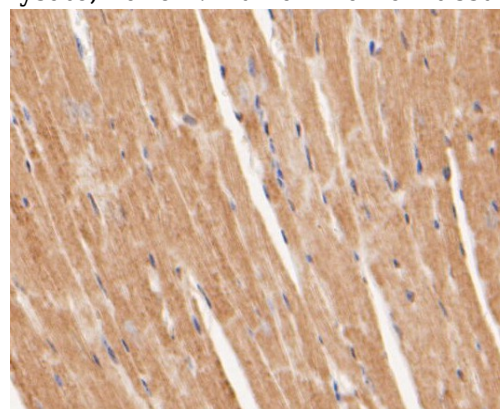


Fig2:: Immunohistochemical analysis of paraffin-embedded mouse heart tissue using anti-Perilipin-5 antibody. The section was pre-treated using heat mediated antigen retrieval with Tris-EDTA buffer (pH 8.0-8.4) for 20 minutes. The tissues were blocked in 5% BSA for 30 minutes at room temperature, washed with ddH<sub>2</sub>O and PBS, and then probed with the primary antibody ( 1/100) for 30 minutes at room temperature. The detection was performed using an HRP conjugated compact polymer system. DAB was used as the chromogen. Tissues were counterstained with hematoxylin and mounted with DPX.

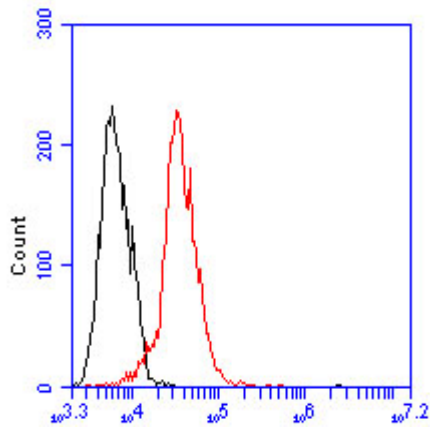


Fig3;; Flow cytometric analysis of Perilipin-5 was done on JAR cells. The cells were fixed, permeabilized and stained with the primary antibody ( 1/100) (red). After incubation of the primary antibody at room temperature for an hour, the cells were stained with a Alexa Fluor 488-conjugated goat anti-rabbit IgG Secondary antibody at 1/500 dilution for 30 minutes. Unlabelled sample was used as a control (cells without incubation with primary antibody; black).