

# PRDX6 antibody



Catalog Number: 114178

## Product name

PRDX6 antibody

IP: 1:200-1:2000

IHC: 1:20-1:200

## Specificity

Human, Mouse, Rat; other species not tested.

IF: 1:20-1:200

## Antibody description

PRDX6 Rabbit Polyclonal antibody. Positive IP detected in HeLa cells. Positive WB detected in A549 cells, HeLa cells, SH-SY5Y cells. Positive IF detected in HeLa cells. Positive IHC detected in human brain tissue. Observed molecular weight by Western-blot: 25-30kd

## Preparation

This antibody was obtained by immunization of PRDX6 recombinant protein (Accession Number: NM\_004905). Purification method: Antigen affinity purified.

## Formulation

PBS with 0.02% sodium azide and 50% glycerol pH 7.3.

## Storage

Store at -20°C. DO NOT ALIQUOT

## Clonality

Polyclonal

## Ig Type

Rabbit IgG

## Applications

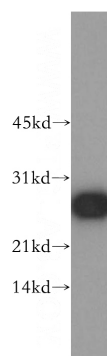
ELISA, WB, IF, IHC, IP

## Dilutions

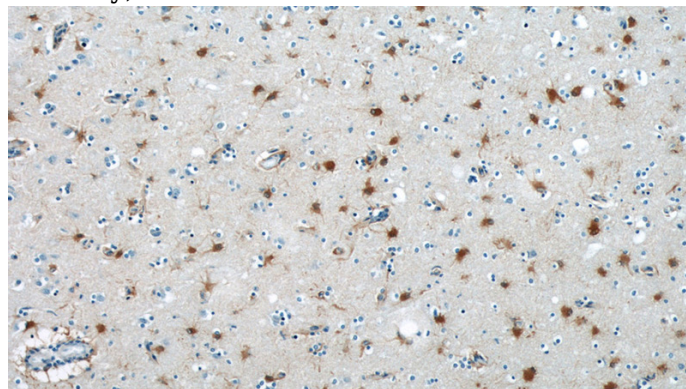
Recommended Dilution:

WB: 1:500-1:5000

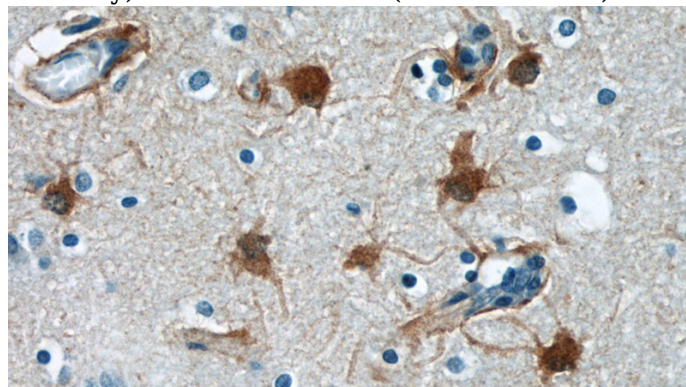
## Validations



A549 cells were subjected to SDS PAGE followed by western blot with Catalog No:114178(PRDX6 antibody) at dilution of 1:500



Immunohistochemical of paraffin-embedded human brain using Catalog No:114178(PRDX6 antibody) at dilution of 1:50 (under 10x lens)

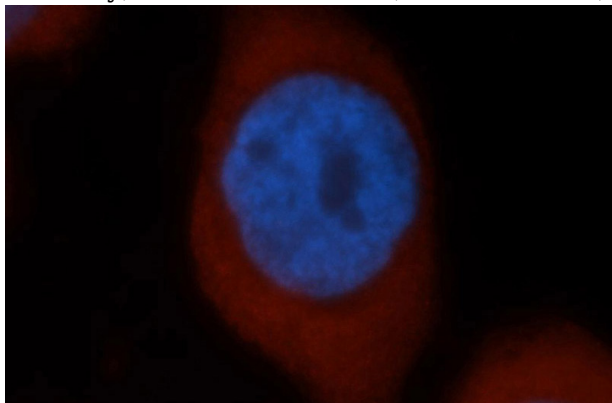


Immunohistochemical of paraffin-embedded

# PRDX6 antibody

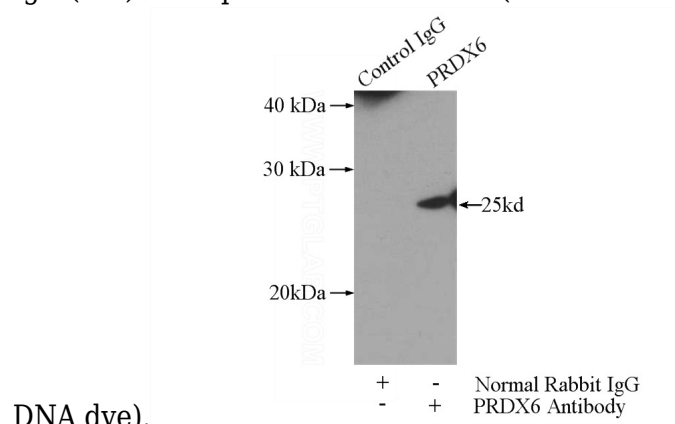
Catalog Number: 114178

human brain using Catalog No:114178(PRDX6 antibody) at dilution of 1:50 (under 40x lens)



Immunofluorescent analysis of HeLa cells, using PRDX6 antibody Catalog No:114178 at 1:50 dilution and Rhodamine-labeled goat anti-rabbit

IgG (red). Blue pseudocolor = DAPI (fluorescent



DNA dye).

IP Result of anti-PRDX6 (IP:Catalog No:114178, 3ug; Detection:Catalog No:114178 1:500) with HeLa cells lysate 2800ug.