

Human Syndecan-1/SDC1/CD138 (His Tag) recombinant protein



Catalog Number: 502178

General Information

Protein Construction

A DNA sequence encoding the human SDC1 (NP_002988.3) extracellular domain (Met 1-Glu 251) was expressed, with a polyhistidine tag at the C-terminus.

Organism

Human

Expression Host

Human Cells

QC Testing

Purity

> 92 % as determined by SDS-PAGE

Endotoxin

< 1.0 EU per μg of the protein as determined by the LAL method

Stability

Samples are stable for up to twelve months from date of receipt at -70°C

Predicted N terminal

Gln 18

Molecular Mass

The recombinant human SDC1 consists of 245 amino acids and predicts a molecular mass of 25.6 kDa. In SDS-PAGE under reducing

conditions, the apparent molecular mass of rh SDC1 is approximately 48-55 kDa due to glycosylation.

Formulation

Lyophilized from sterile PBS, pH 7.4

1. 5 % trehalose and mannitol are added as protectants before lyophilization.

2. Please contact us for any concerns or special requirements.

Usage Guide

Storage

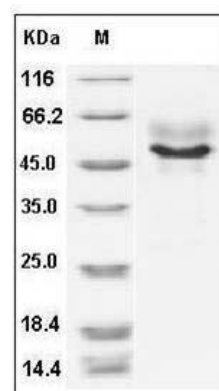
Store it under sterile conditions at -20°C to -80°C .

It is recommended that the protein be aliquoted for optimal storage. Avoid repeated freeze-thaw cycles.

Reconstitution

Adding sterile water, prepare a stock solution of 0.25 mg/ml. Concentration is measured by UV-Vis.

SDS-PAGE



Human Syndecan-1 / SDC1 / CD138 Protein (His Tag) SDS-PAGE