

# EIF2A antibody

Catalog Number: 110178

## Product name

EIF2A antibody

## Specificity

Human, Mouse, Rat; other species not tested.

## Antibody description

EIF2A Rabbit Polyclonal antibody. Positive WB detected in HepG2 cells, HeLa cells, MCF7 cells, MDA-MB-453s cells, mouse pancreas tissue, PC-3 cells, Raji cells. Positive IP detected in MCF-7 cells. Positive IF detected in HepG2 cells, Ethacrynic acid treated HepG2 cells. Positive IHC detected in human prostate cancer tissue, human pancreas tissue. Positive FC detected in HepG2 cells. Observed molecular weight by Western-blot: 65 kDa

## Preparation

This antibody was obtained by immunization of EIF2A recombinant protein (Accession Number: NM\_032025). Purification method: Antigen affinity purified.

## Formulation

PBS with 0.1% sodium azide and 50% glycerol pH 7.3.

## Storage

Store at -20°C. DO NOT ALIQUOT

## Clonality

Polyclonal

## Ig Type

Rabbit IgG

## Applications

ELISA, WB, IHC, IP, IF, FC

## Dilutions

Recommended Dilution:

WB: 1:500-1:5000

IP: 1:500-1:5000

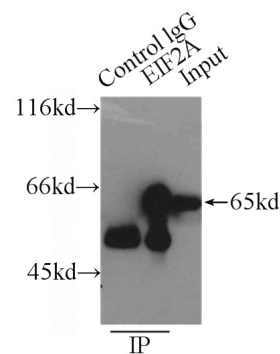
IHC: 1:20-1:200

IF: 1:20-1:200

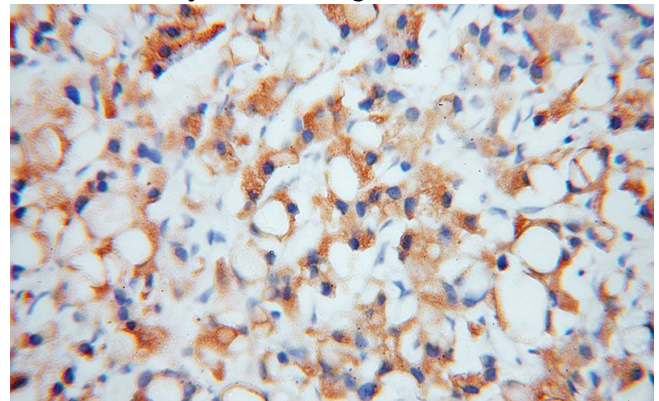
## Validations



HepG2 cells were subjected to SDS PAGE followed by western blot with Catalog No:110178(EIF2A antibody) at dilution of 1:300



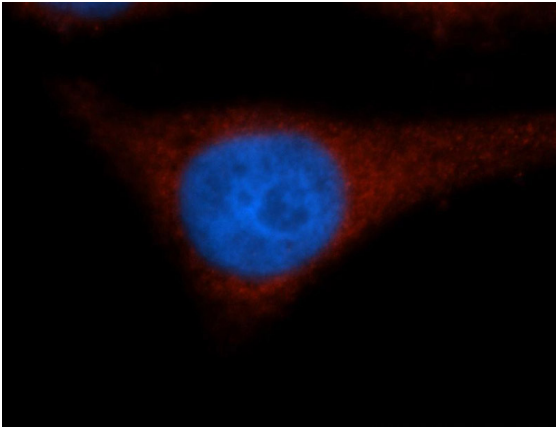
IP Result of anti-EIF2A (IP:Catalog No:110178, 3ug; Detection:Catalog No:110178 1:1000) with MCF-7 cells lysate 3250ug.



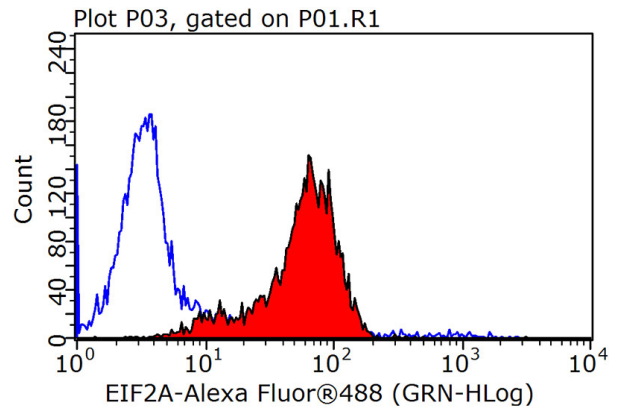
Immunohistochemical of paraffin-embedded human prostate cancer using Catalog No:110178(EIF2A antibody) at dilution of 1:50 (under 40x lens)

# EIF2A antibody

Catalog Number: 110178



Immunofluorescent analysis of HepG2 cells, using EIF2A antibody Catalog No:110178 at 1:50 dilution and Rhodamine-labeled goat anti-rabbit IgG (red). Blue pseudocolor = DAPI (fluorescent DNA dye).



1X10<sup>6</sup> HepG2 cells were stained with .2ug EIF2A antibody (Catalog No:110178, red) and control antibody (blue). Fixed with 90% MeOH blocked with 3% BSA (30 min). Alexa Fluor 488-conjugated AffiniPure Goat Anti-Rabbit IgG(H+L) with dilution 1:1000.