

# SLC1A2 Polyclonal Antibody



Catalog Number: 160178

## Product name

SLC1A2 Polyclonal Antibody

## Specificity

Human, Mouse, Rat

## Antibody description

Polyclonal antibody to SLC1A2

## Preparation

Antigen: Recombinant fusion protein containing a sequence corresponding to amino acids 495-574 of human SLC1A2 (NP\_004162.2).

## Formulation

PBS with 0.02% sodium azide, 50% glycerol, pH7.3.

## Storage

Store at -20°C. Avoid freeze / thaw cycles.

## Clonality

Polyclonal

## Ig Type

Rabbit IgG

## Applications

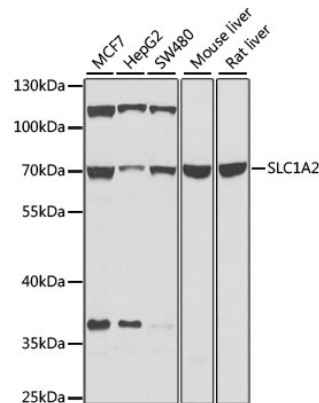
WB, IHC

## Dilutions

WB 1:500 - 1:5000

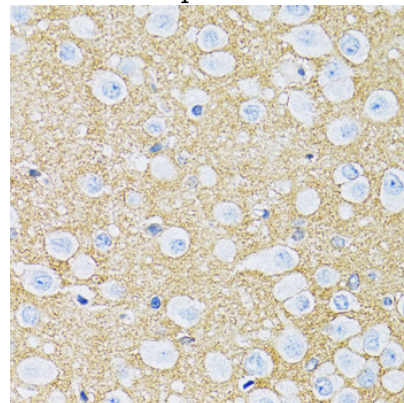
IHC 1:100 - 1:200

## Validations



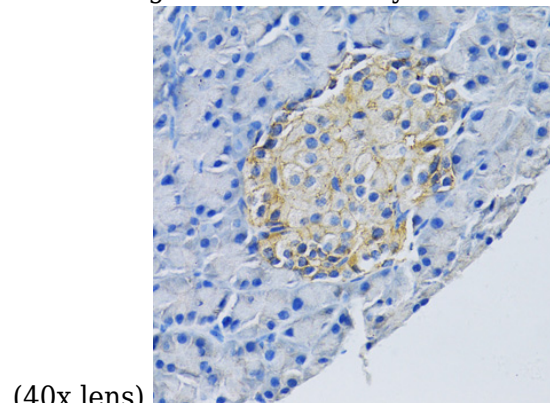
Western blot - SLC1A2 Polyclonal Antibody

Western blot analysis of extracts of various cell lines, using SLC1A2 antibody at 1:1000 dilution. Secondary antibody: HRP Goat Anti-Rabbit IgG (H+L) at 1:10000 dilution. Lysates/proteins: 25ug per lane. Blocking buffer: 3% nonfat dry milk in TBST. Detection: ECL Basic Kit. Exposure time: 15s.



Immunohistochemistry - SLC1A2 Polyclonal Antibody

Immunohistochemistry of paraffin-embedded rat brain using SLC1A2 antibody at dilution of 1:100



(40x lens).

# SLC1A2 Polyclonal Antibody

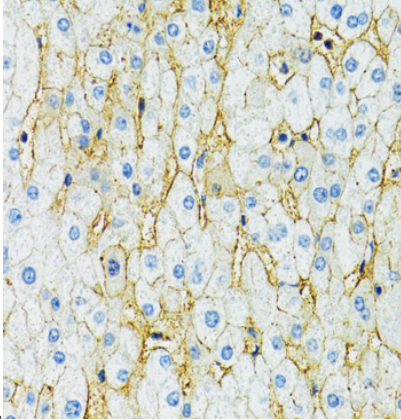


Catalog Number: 160178

---

Immunohistochemistry - SLC1A2 Polyclonal Antibody

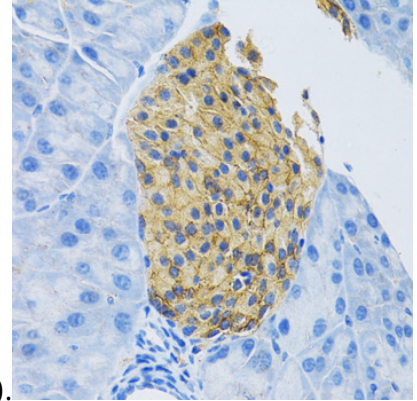
Immunohistochemistry of paraffin-embedded rat pancreas using SLC1A2 antibody at dilution of



1:100 (40x lens).

Immunohistochemistry - SLC1A2 Polyclonal Antibody

Immunohistochemistry of paraffin-embedded human liver using SLC1A2 antibody at dilution of



1:100 (40x lens).

Immunohistochemistry - SLC1A2 Polyclonal Antibody

Immunohistochemistry of paraffin-embedded mouse pancreas using SLC1A2 antibody at dilution of 1:100 (40x lens).