

# Caspase 6/p18/p11 antibody



Catalog Number: 108878

## Product name

Caspase 6/p18/p11 antibody

## Specificity

Human, Mouse, Rat; other species not tested.

## Antibody description

Caspase 6/p18/p11 Rabbit Polyclonal antibody. Positive IHC detected in human prostate cancer tissue, human lung cancer tissue, human skin tissue. Positive WB detected in Jurkat cells, HeLa cells, mouse brain tissue. Observed molecular weight by Western-blot: 33-35 kDa

## Preparation

This antibody was obtained by immunization of Caspase 6/p18/p11 recombinant protein (Accession Number: NM\_001226). Purification method: Antigen affinity purified.

## Formulation

PBS with 0.1% sodium azide and 50% glycerol pH 7.3.

## Storage

Store at -20°C. DO NOT ALIQUOT

## Clonality

Polyclonal

## Ig Type

Rabbit IgG

## Applications

ELISA, WB, IHC

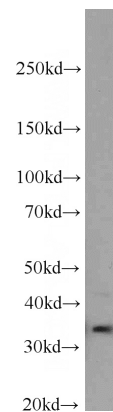
## Dilutions

Recommended Dilution:

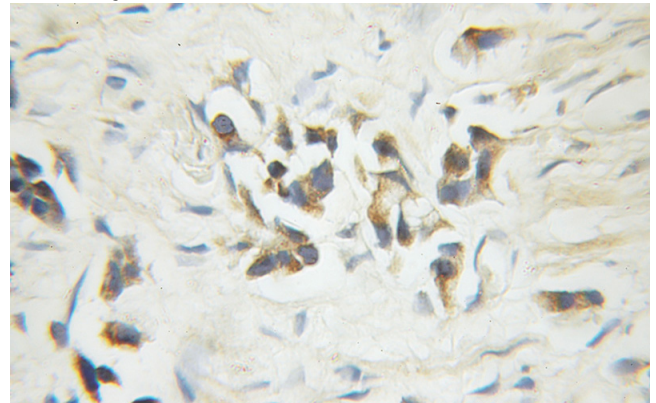
WB: 1:200-1:2000

IHC: 1:20-1:200

## Validations



Jurkat cells were subjected to SDS PAGE followed by western blot with Catalog No:108878(CASP6 antibody) at dilution of 1:800



Immunohistochemical of paraffin-embedded human prostate cancer using Catalog No:108878(CASP6 antibody) at dilution of 1:50 (under 10x lens)