

# Rat E-Selectin/CD62e/SELE (His Tag) recombinant protein



Catalog Number: 503878

## General Information

### Gene Name Synonym

CD62 antigen-like family member E; Endothelial leukocyte adhesion molecule 1; Leukocyte-endothelial cell adhesion molecule 2

### Protein Construction

A DNA sequence encoding the rat SELE (P98105-1) extracellular domain (Met 1-Pro 494) was expressed, fused with a polyhistidine tag at the C-terminus.

### Organism

Rat

### Expression Host

Human Cells

## QC Testing

### Activity

Measured by the ability of the immobilized protein to support the adhesion of U937 human histiocytic lymphoma cells. When  $5 \times 10^4$  cells/well are added to rat E Selectin/Fc Chimera coated plates (2  $\mu\text{g}/\text{mL}$  with 100  $\mu\text{L}/\text{well}$ ), approximately 30%-60% will adhere for 1 hour incubation at 37°C. Optimal dilutions should be determined by each laboratory for each application.

### Purity

> 97 % as determined by SDS-PAGE

### Endotoxin

< 1.0 EU per  $\mu\text{g}$  of the protein as determined by the LAL method

### Stability

Samples are stable for up to twelve months from date of receipt at -70°C

## Predicted N terminal

Trp 22

## Molecular Mass

The recombinant rat SELE comprises 484 amino acids and predicts a molecular mass of 53 kDa. The apparent molecular mass of the rat SELE is approximately 70-80 kDa in SDS-PAGE under reducing conditions due to glycosylation.

## Formulation

Lyophilized from sterile PBS, pH 7.4

1. 5 % trehalose and mannitol are added as protectants before lyophilization.
2. Please contact us for any concerns or special requirements.

## Usage Guide

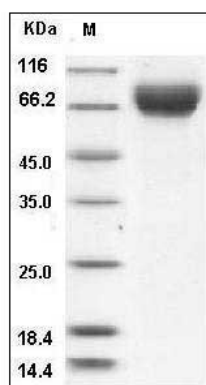
### Storage

Store it under sterile conditions at -20°C to -80°C. It is recommended that the protein be aliquoted for optimal storage. Avoid repeated freeze-thaw cycles.

### Reconstitution

Adding sterile water, prepare a stock solution of 0.25 mg/ml. Concentration is measured by UV-Vis.

## SDS-PAGE



Rat E-Selectin / CD62e / SELE Protein (His Tag)

**Rat E-Selectin/CD62e/SELE (His Tag)  
recombinant protein**



Catalog Number: 503878

---

SDS-PAGE