

# Human Pin1 recombinant protein



Catalog Number: 501878

## General Information

### Gene Name Synonym

Peptidyl-prolyl cis-trans isomerase Pin1; Rotamase Pin1

### Protein Construction

A DNA sequence encoding the mature form of human PIN1 (Q13526-1) (Met 1-Glu 163) was expressed and purified.

### Organism

Human

### Expression Host

E. coli

## QC Testing

### Purity

> 95 % as determined by SDS-PAGE

### Endotoxin

Please contact us for more information.

### Stability

Samples are stable for up to twelve months from date of receipt at -70°C

### Predicted N terminal

Met

### Molecular Mass

The recombinant human PIN1 consisting of 163

amino acids and has a calculated molecular mass of 18.2 KDa. It migrates as an approximately 18 KDa band in SDS-PAGE under reducing conditions.

### Formulation

Lyophilized from sterile 50mM Tris, 10% glycerol, pH 8.0.

1. 5 % trehalose and mannitol are added as protectants before lyophilization.

2. Please contact us for any concerns or special requirements.

## Usage Guide

### Storage

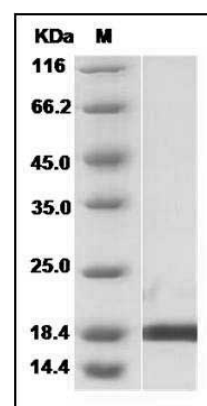
Store it under sterile conditions at -20°C to -80°C.

It is recommended that the protein be aliquoted for optimal storage. Avoid repeated freeze-thaw cycles.

### Reconstitution

Adding sterile water, prepare a stock solution of 0.25 mg/ml. Concentration is measured by UV-Vis.

### SDS-PAGE



Human PIN1 / Rotamase Pin1 Protein SDS-PAGE