

GGA2 Polyclonal Antibody



Catalog Number: 160878

Product name

GGA2 Polyclonal Antibody

Specificity

Human, Mouse, Rat

Antibody description

Polyclonal antibody to GGA2

Preparation

Antigen: Recombinant fusion protein containing a sequence corresponding to amino acids 1-300 of human GGA2 (NP_055859.1).

Formulation

PBS with 0.02% sodium azide, 50% glycerol, pH7.3.

Storage

Store at -20°C. Avoid freeze / thaw cycles.

Clonality

Polyclonal

Ig Type

Rabbit IgG

Applications

WB, IHC, IF

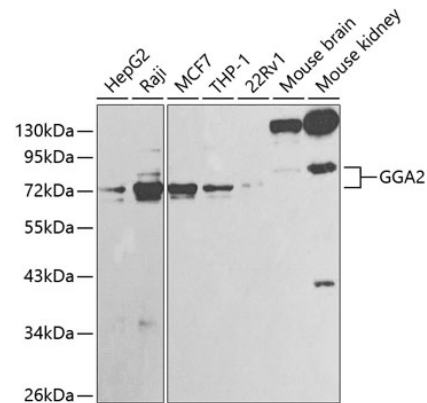
Dilutions

WB 1:500 - 1:2000

IHC 1:50 - 1:200

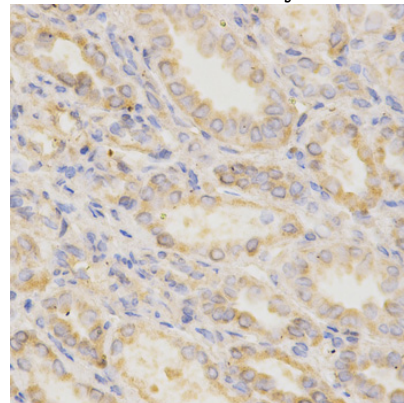
IF 1:50 - 1:200

Validations



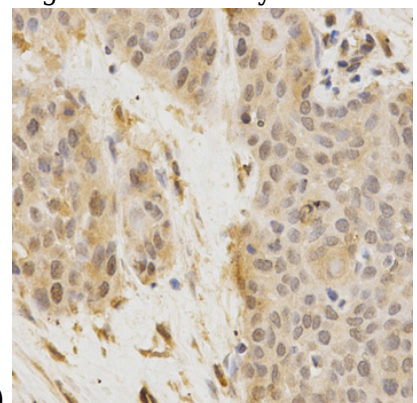
Western blot - GGA2 Polyclonal Antibody

Western blot analysis of extracts of various cell lines, using GGA2 antibody at 1:1000 dilution. Secondary antibody: HRP Goat Anti-Rabbit IgG (H+L) at 1:10000 dilution. Lysates/proteins: 25ug per lane. Blocking buffer: 3% nonfat dry milk in TBST.



Immunohistochemistry - GGA2 Polyclonal Antibody

Immunohistochemistry of paraffin-embedded human kidney using GGA2 Antibody at dilution of



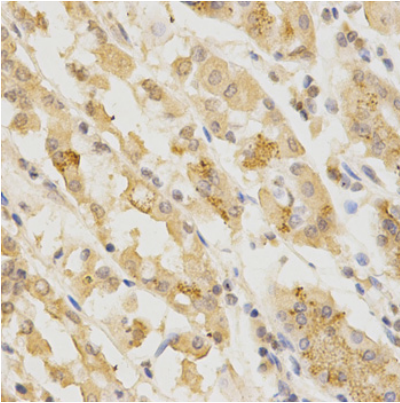
1:200 (40x lens).

GGA2 Polyclonal Antibody

Catalog Number: 160878

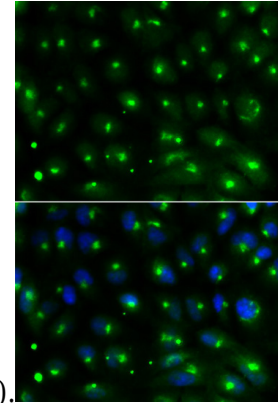
Immunohistochemistry - GGA2 Polyclonal Antibody

Immunohistochemistry of paraffin-embedded human esophageal cancer using GGA2 Antibody at dilution of 1:200 (40x lens).



Immunohistochemistry - GGA2 Polyclonal Antibody

Immunohistochemistry of paraffin-embedded human stomach using GGA2 Antibody at dilution



of 1:200 (40x lens).

Immunofluorescence - GGA2 Polyclonal Antibody

Immunofluorescence analysis of MCF-7 cells using GGA2 antibody . Blue: DAPI for nuclear staining.