

# Cortactin antibody



Catalog Number: 109478

## Product name

Cortactin antibody

Recommended Dilution:

WB: 1:1000-1:10000

## Specificity

Human, Mouse, Rat; other species not tested.

IP: 1:200-1:1000

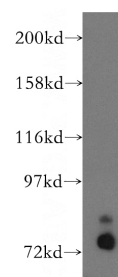
IHC: 1:20-1:200

## Antibody description

Cortactin Rabbit Polyclonal antibody. Positive WB detected in HeLa cells, HEK-293 cells, MCF7 cells, NIH/3T3 cells. Positive IP detected in HEK-293 cells. Positive FC detected in HeLa cells. Positive IF detected in HeLa cells, HepG2 cells. Positive IHC detected in human pancreas cancer tissue. Observed molecular weight by Western-blot: 75~80 kDa

IF: 1:20-1:200

## Validations



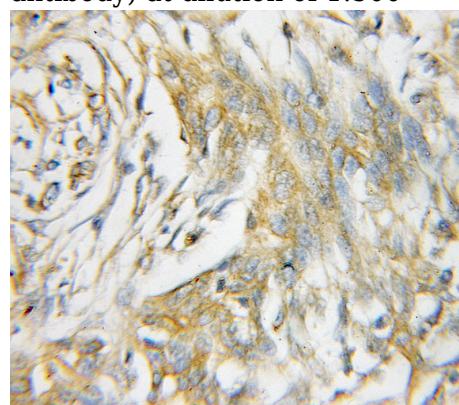
## Preparation

This antibody was obtained by immunization of Cortactin recombinant protein (Accession Number: NM\_138565). Purification method: Antigen affinity purified.

HeLa cells were subjected to SDS PAGE followed by western blot with Catalog No:109478(CTTN antibody) at dilution of 1:500

## Formulation

PBS with 0.1% sodium azide and 50% glycerol pH 7.3.



## Storage

Store at -20°C. DO NOT ALIQUOT

## Clonality

Polyclonal

## Ig Type

Rabbit IgG

Immunohistochemical of paraffin-embedded human pancreas cancer using Catalog No:109478(CTTN antibody) at dilution of 1:100 (under 10x lens)

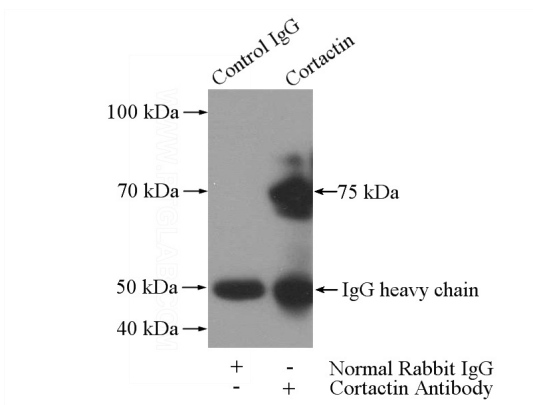
## Applications

ELISA, WB, IHC, FC, IF, IP

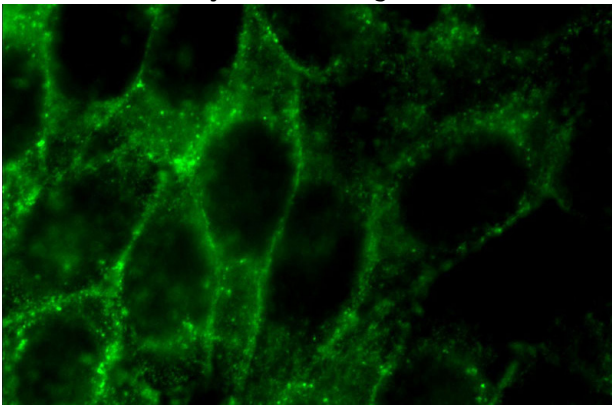
## Dilutions

# Cortactin antibody

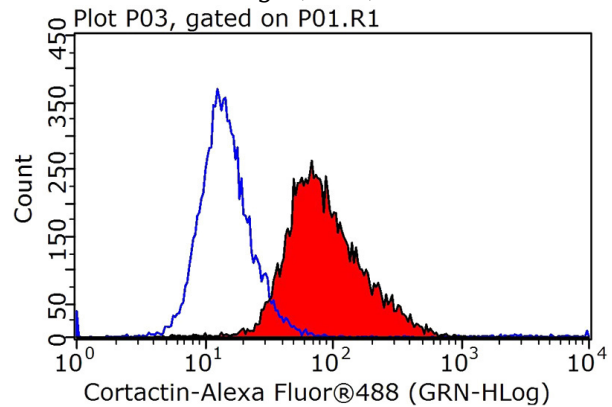
Catalog Number: 109478



IP Result of anti-Cortactin (IP:Catalog No:109478, 4ug; Detection:Catalog No:109478 1:300) with HEK-293 cells lysate 2000ug.



Immunofluorescent analysis of HeLa cells using Catalog No:109478(Cortactin Antibody) at dilution of 1:50 and Alexa Fluor 488-conjugated AffiniPure Goat Anti-Rabbit IgG(H+L)



$1 \times 10^6$  HeLa cells were stained with 0.2ug Cortactin antibody (Catalog No:109478, red) and control antibody (blue). Fixed with 90% MeOH blocked with 3% BSA (30 min). Alexa Fluor 488-conjugated AffiniPure Goat Anti-Rabbit IgG(H+L) with dilution 1:1000.