

# Anti-NR3C1 antibody



Catalog Number: 142478

## Product name

Anti-NR3C1 antibody

## Specificity

Human NR3C1

## Antibody description

Rabbit Polyclonal to Human NR3C1

## Preparation

Produced in rabbits immunized with a synthetic peptide corresponding to the center region of the Human NR3C1, and purified by antigen affinity chromatography.

## Formulation

0.2 µm filtered solution in PBS

## Storage

This antibody can be stored at 2°C-8°C for one month without detectable loss of activity. Antibody products are stable for twelve months from date of receipt when stored at -20°C to -80°C.

Preservative-Free.

Sodium azide is recommended to avoid contamination (final concentration 0.05%-0.1%). It is toxic to cells and should be disposed of properly. Avoid repeated freeze-thaw cycles.

## Clonality

Polyclonal

## Ig Type

Rabbit IgG

## Applications

IHC-P, ICC/IF, IF, IP

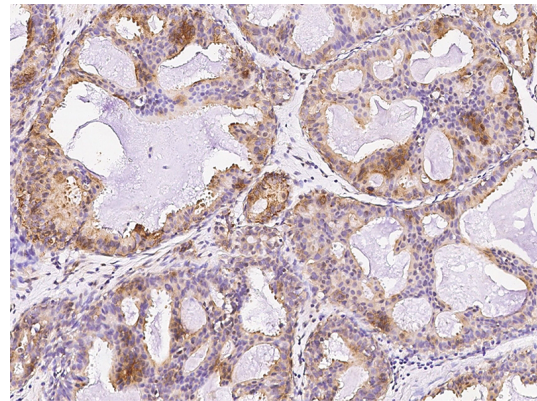
## Dilutions

IHC-P: 0.1-2 µg/mL

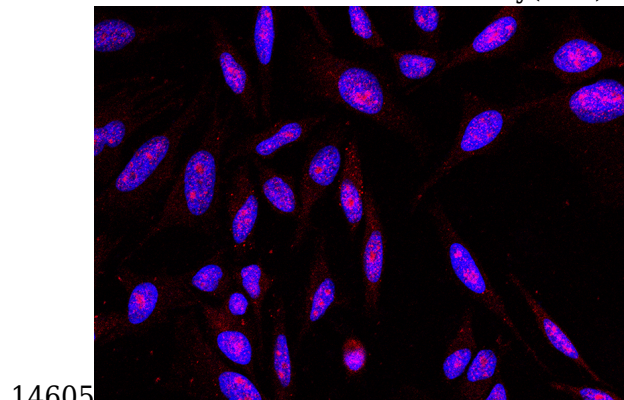
ICC/IF: 1-5 µg/mL

IP: 4-8 µl/mg of lysate

## Validations

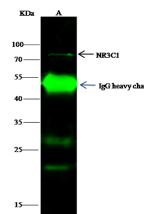


Human NR3C1 Immunohistochemistry(IHC)



14605

Human NR3C1 Immunofluorescence(IF) 14606



Items	Lanes	A
Sample (whole cell lysate)		A549
Sample quantity		0.5 mg
IP antibody quantity		4 µL
Protein G agarose		15 µl of 50% Protein G Agarose
Gel		15% SDS-PAGE reducing.gel
Primary antibody		KL11-SMCC-sinoS1092 antibody at 10 µg/ml
Secondary antibody		Dylight 800-labeled antibody to rabbit IgG (1:1), at 1:5000 dilution

Human NR3C1 Immunoprecipitation(IP) 14607