

Anti-CREB1 antibody



Catalog Number: 100478

Product name

Anti-CREB1 antibody

Specificity

Human CREB1

Antibody description

Mouse monoclonal to CREB1

Preparation

This antibody was produced from a hybridoma resulting from the fusion of a mouse myeloma with B cells obtained from a mouse immunized with purified, recombinant Human CREB1 (rh CREB1; P16220-2; Met1-Asp327). The IgG fraction of the cell culture supernatant was purified by Protein A affinity chromatography.

Formulation

0.2 µm filtered solution in PBS

Storage

This antibody can be stored at 2°C-8°C for one month without detectable loss of activity. Antibody products are stable for twelve months from date of receipt when stored at -20°C to -80°C.

Preservative-Free.

Sodium azide is recommended to avoid contamination (final concentration 0.05%-0.1%). It is toxic to cells and should be disposed of properly. Avoid repeated freeze-thaw cycles.

Clonality

Monoclonal

Ig Type

Mouse IgG2b

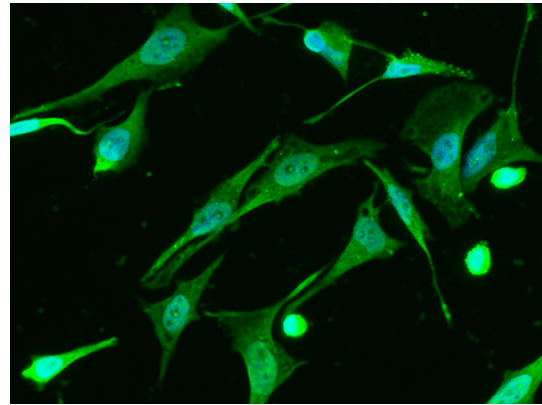
Applications

IF, ICC/IF

Dilutions

ICC/IF: 10-25 µg/mL

Validations



CREB1 Antibody, Mouse MAb,
Immunofluorescence

Immunofluorescence staining of Human CREB1 in Hela cells. Cells were fixed with 4% PFA, permeabilized with 0.3% Triton X-100 in PBS, blocked with 10% serum, and incubated with Mouse anti-Human CREB1 monoclonal antibody (15 µg/ml) at 37°C 1 hour. Then cells were stained with the Alexa Fluor® 488-conjugated Goat Anti-mouse IgG secondary antibody (green) and counterstained with DAPI (blue). Positive staining was localized to nucleus.