

Anti-KLF4 Rabbit antibody



Catalog Number: 169078

Product name

Anti-KLF4 Rabbit antibody

Specificity

Human, Mouse, Rat

Antibody description

KLF4 Rabbit polyclonal antibody

Preparation

Antigen: A synthesized peptide derived from human KLF4

Formulation

Rabbit IgG in phosphate buffered saline , pH 7.4, 150mM NaCl, 0.02% sodium azide and 50% glycerol.

Storage

Store at 4°C short term. Store at -20°C long term. Avoid freeze / thaw cycle.

Clonality

Polyclonal

Ig Type

Rabbit IgG

Applications

WB, IHC-P, ICC/IF

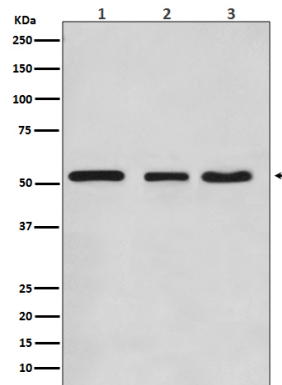
Dilutions

WB: 1/500-1/2000

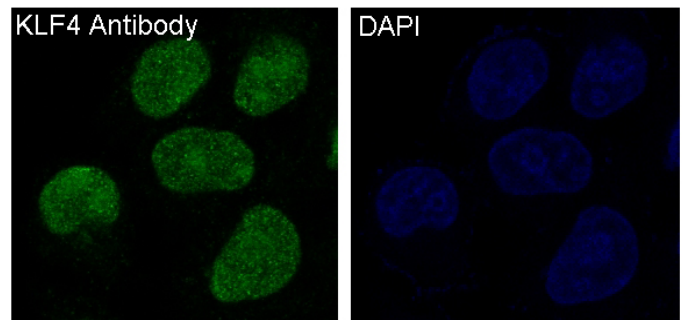
IHC: 1/50-1/200

ICC/IF: 1/50-1/200

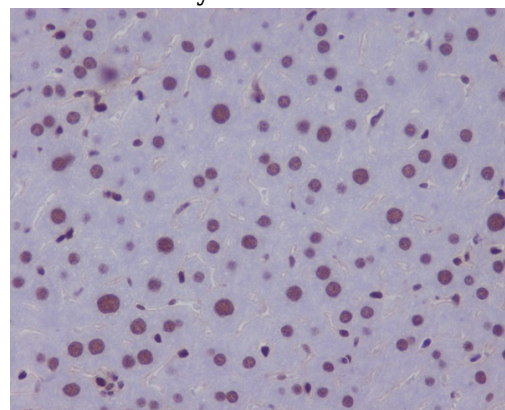
Validations



Western blot analysis of KLF4 expression in (1) HeLa cell lysate; (2) NIH/3T3 cell lysate; (3) C6 cell lysate.



Immunofluorescent analysis of HeLa cells, using KLF4 Antibody.



Immunohistochemical analysis of paraffin-embedded mouse liver, using KLF4 Antibody.